



# Learning that works for New Jersey

# CTE™

**May 3, 2012 • Hilton East Brunswick • East Brunswick, New Jersey**

*Sponsored by the New Jersey Department of Education  
Office of Career and Technical Education*



State of New Jersey

DEPARTMENT OF EDUCATION

PO Box 500

TRENTON, NJ 08625-0500

CHRIS CHRISTIE  
*Governor*

KIM GUADAGNO  
*Lt. Governor*

CHRISTOPHER D. CERF  
*Acting Commissioner*

May 3, 2012

Dear Conference Participants:

Welcome to New Jersey's statewide Career & Technical Education Conference, hosted by the New Jersey Department of Education, Office of Career and Technical Education.

The theme of today's conference is "CTE: Learning that works for New Jersey" which reflects the new vision for Career and Technical Education. The new vision for Career and Technical Education (CTE) calls for bold steps necessary to jumpstart dramatic change in our nation's education and workforce preparation systems. By meeting the current needs and anticipating the future demands of the economy, CTE is critical to our nation's economic success and is a leader in building collaborative connections among education, economic development, and workforce development.

In developing this conference, we endeavored to provide a robust agenda with workshops led by practitioners and experts in the field, sharing evidence-based strategies and techniques that lead to improved outcomes and accelerated learning opportunities for students at the secondary and postsecondary levels.

We value the efforts of all of our stakeholders involved in developing, implementing and supporting quality CTE programs. It is through these efforts that we will strive to create programs of excellence that prepare students to meet the demands of this global economy. Your presence here demonstrates your dedication to helping students achieve success both academically and professionally.

Enjoy the day and thank you for participating!

Marie Barry, Director  
Office of Career and Technical Education

[www.nj.gov/education](http://www.nj.gov/education)

New Jersey Is An Equal Opportunity Employer • Printed on Recycled and Recyclable Paper

## ACKNOWLEDGEMENTS

**Chris Christie**

*Governor, State of New Jersey*

**Christopher D. Cerf**

*Acting Commissioner of Education*

### **STATE BOARD OF EDUCATION**

ARCELIO APONTE ..... Piscataway  
President

ILAN PLAWKER ..... Englewood Cliffs  
Vice President

MARK W. BIEDRON ..... Tewksbury

RONALD K. BUTCHER ..... Pitman

CLAIRE CHAMBERLAIN ECKERT ..... Bernardsville

JOSEPH FISICARO ..... Evesham

JACK FORNARO ..... Oxford

EDITHE FULTON ..... Toms River

ROBERT P. HANEY ..... Holmdel

ERNEST P. LEPORE ..... West New York

ANDREW J. MULVIHILL ..... Andover

J. PETER SIMON ..... Green Village

DOROTHY STRICKLAND ..... West Orange

# AGENDA

## Thursday, May 3, 2012



GLOBAL  
COMPETITIVENESS  
SUCCEED  
LEARNING  
SKILLED  
COLLEGE &  
CAREER READINESS  
ECONOMIC  
RATES  
STUDENT  
SUCCESS  
CAREER  
LEADERSHIP  
ECONOMIC  
RIGOR  
ECONOMIC VITALITY  
RELEVANCE  
ENTREPRENEURSHIP  
LEADING CHANGE  
MAKING THE  
DIFFERENCE  
COLLEGE &  
CAREER  
READINESS  
HIGH-DEMAND  
OPPORTUNITY  
STUDENT  
SUCCESS  
ENTREPRENEURSHIP  
ECONOMIC DEVELOPMENT  
TRANSFORMING  
EXPECTATIONS

- |                                |  |
|--------------------------------|--|
| <b>7:30 a.m.</b>               | <b>Registration Opens</b>  |
| <b>8:30 a.m. – 10:30 a.m.</b>  | <b>Two Hour Pre-Conference Sessions</b>  |
| <b>9:30 a.m. – 10:30 a.m.</b>  | <b>One Hour Pre-Conference Sessions</b>  |
| <b>10:30 a.m. – 11:30 a.m.</b> | <b>Welcome - Salon D/E</b><br>Marie Barry, Director<br>Office of Career and Technical Education<br>New Jersey Department of Education<br><br><b>Introduction of Keynote Speaker - Salon D/E</b><br>Barbara Gantwerk, Assistant Commissioner<br>Division of Student and Field Services<br>New Jersey Department of Education<br><br><b>Keynote Address - Salon D/E</b><br>Dr. Randal D. Pinkett, Chairman and CEO<br>BCT Partners |
| <b>11:30 a.m. – 12:30 p.m.</b> | <b>Concurrent Sessions</b>   |
| <b>12:30 p.m. – 1:20 p.m.</b>  | <b>LUNCH</b>   |
| <b>1:30 p.m. – 2:30 p.m.</b>   | <b>Concurrent Sessions</b>   |
| <b>2:40 p.m. – 3:40 p.m.</b>   | <b>Concurrent Sessions</b>   |
| <b>3:40 p.m.</b>               | <b>Conference Adjourns</b>   |

\* \* \*

*Conference presentations can be accessed at:  
<http://www.nj.gov/education/cte/conf/pres/>*

## ***"The Three Essential Mindsets to Compete in the 21st Century"***

### **Keynote Address**

# **Dr. Randal D. Pinkett**

**Chairman and CEO,  
BCT Partners**



Three trends are having a tremendous impact on our nation's education and workforce development systems. The first trend reflects a fundamental shift that is taking place in our economy. Not only have jobs that were once the province of the United States moved overseas, but also domestic workers are being asked to "do more with less". The second trend is a marketplace characterized by an increasingly rapid pace of change. The need to be adaptable to hyper-accelerated changes across industries has never been more important. The third trend is an increasingly diverse society. More than ever before, Americans are being required to work with people from a broad range of diverse backgrounds. These three trends are contributing to a new landscape that requires new ways of thinking – or new mindsets – to be competitive in the 21st century. During this keynote address, Dr. Randal Pinkett will present the three essential mindsets that students must embrace today in order to effectively compete tomorrow.

Dr. Randal Pinkett is a proud graduate of New Jersey's public secondary and postsecondary education systems. He is the chairman and CEO of his fifth venture, BCT Partners, headquartered in Newark, NJ. A graduate of Hightstown High School where he was a member of the Future Business Leaders of America (FBLA), he holds five academic degrees from Rutgers University. He graduated with a 3.9 grade point average while competing as captain of the men's track and field team and earning NCAA Academic All-America honors; the University of Oxford as a prestigious Rhodes Scholar; and the Massachusetts Institute of Technology (MIT) as a National Science Foundation Research Fellow. He was the first and only African American to receive the Rhodes Scholarship at Rutgers and was the season four winner of NBC's hit reality television show, *The Apprentice*, with Donald Trump. He is happily married to his wife, Zahara, and they are proud parents of their daughter and two sons.



# WORKSHOP DESCRIPTIONS

## Two Hour Pre-Conference Sessions 8:30 a.m. – 10:30 a.m.



### **Best of Both Worlds: Connecting HS Students with Registered Apprenticeship and College**

**Presenters:** *Christopher DiMeo, Coordinator, Youth Transition to Work (YTTW) Program, New Jersey State Building & Construction Trades Council*  
*Jeanine Nagrod, Director, NJPLACE*  
*Bruce Negri, Apprenticeship & Training Representative, US Department of Labor, Office of Apprenticeship*  
*Donna Scalia, Apprenticeship & Training Program Specialist, US Department of Labor, Office of Apprenticeship*  
*Laurel Shaffer, Director, UNITE HERE! Local 54's Youth Transition to Work (YTTW) Program*  
*Ira Stern, Coordinator, Youth Transition to Work (YTTW) Program, International Association of Machinists and Aerospace Workers (IAMAW)*

Workshop presenters from select Youth Transition to Work (YTTW) programs, New Jersey Pathways Leading Apprentices to a College Education (NJPLACE) program and the federal Department of Labor will review the foundations young people need to enter apprenticeship and describe how this partnership combines experiential and kinesthetic learning with academic education to transform the traditional college pathway.



### **Common Career Technical Core (CCTC) and Career Readiness Partner Council**

**Presenter:** *Dr. Dean Folkers, Deputy Executive Director, National Association of State Directors of Career Technical Education Consortium (NASDCTEC) /National Career Technical Education Foundation (NCTEF)*

The Common Career Technical Core (CCTC) initiative is a state-led effort to ensure rigorous, high-quality Career Technical Education (CTE) programs through a set of common agreed upon state standards built from industry-validated Career Cluster™ Knowledge and Skills statements. The standards are written to address the expectations across an entire program of study; the focus of their development is to identify the critical, higher-order, foundational concepts/skills for each cluster and pathway. In addition, Standards for Career Ready Practice are designed to enhance the educational experience in preparation for college and career readiness. In this two hour interactive presentation by the Deputy Executive Director of the National Association of State Directors for CTE, the Common Career Technical Core and the Career Readiness Partner Council will be explained and some of the potential implementation strategies explored.



### **Literacy in Career and Technical Education**

**Presenter:** *George Johnson, School Improvement Consultant, Southern Regional Educational Board (SREB)*

This is a working session for participants interested in improving literacy in CTE classes to meet the Common Core State Standards for Literacy in Technical Subjects. Participants should have at minimum a basic understanding of the Common Core. Participants will learn how to embed the Common Core for Literacy in CTE content areas using template tasks for reading and writing. They will design a template task and learn about skill clusters needed to deliver literacy instruction in CTE classes. The current samples being used in NJ and assessment rubrics will be shared.

# WORKSHOP DESCRIPTIONS

## One Hour Pre-Conference Sessions 9:30 a.m. – 10:30 a.m.



### Going Green: A Program of Study for Sustainable Design, Construction and Energy

**Presenters:** *Christopher T. Callahan, Physics Teacher, Bergen County Technical Schools*

*Todd Menadier, Energy Teacher, Bloomfield Tech*

*Timothy Regan, Electrical Design Teacher, Bergen County Technical Schools*

*Judy Savage, Executive Director, NJ Council of County Vocational-Technical Schools*

*Julie Stratton, Science Teacher, Cape May County Technical High School*

This will be a panel presentation, providing an overview of NJ's Green Program of Study for Sustainable Design, Construction and Energy, which is currently being piloted in six school districts statewide. The presentation will address program goals and benefits, implementation challenges and an assessment of the student experience during year one of the pilots.



### Implementing Personalized Student Learning Plans

**Presenters:** *Lori Howard, Education Program Development Specialist, Office of CTE, NJDOE*

*Diana Lobozzo, Pilot Coordinator - Personalized Student Learning Plan, Abraham Clark High School*

A Personalized Student Learning Plan is defined as a formalized plan and process that involves students setting learning goals based on personal, academic and career interests, with the close support of adult mentors. This workshop will highlight the implementation efforts of New Jersey's Personalized Student Learning Plan Pilot Program in the middle grades (6th - 8th) and high school (9th - 12th).



### Increasing the Number of Nationally Recognized Tests of Technical Skill Attainment

**Presenters:** *Kay Eaton, Director of Grants and Special Projects, Mercer County Community College*

*Linda Martin, Dean, Division of Math, Science and Health Professions, Mercer County Community College*

*Sean McDonald, Education Program Development Specialist, Office of CTE, NJDOE*

Mercer County Community College has implemented a pilot program to assist students/faculty to prepare for nationally recognized exams in their fields of study. Come hear about the programs selected: Medical Laboratory Technology, and Culinary Arts/Hotel, Restaurant and Institutional Management.



### Making the CASE for STEM in CTE

**Presenter:** *Tiffany Morey, Teacher of Agricultural Science, Essex County Vocational Technical School District*

Essex County Vocational School District will discuss how the Curriculum for Agricultural Science Education (CASE) model is adding STEM components to the agricultural science education classroom. CASE, which is based off of Project Lead the Way, adds academic rigor to the CTE classroom through fun and interactive inquiry-based activities, labs, projects, and problems that satisfy national education standards for language arts, mathematics, and science. With CASE, agricultural science education programs are on the move with STEAM (science, technology, engineering, agriculture, and math)!

# WORKSHOP DESCRIPTIONS



## Middlesex Academy for Allied Health and Project Lead the Way-Biomedical Sciences

**Presenters:** *Dr. Jennifer Frank, Teacher, Middlesex County Vocational & Technical Schools*  
*Dr. Patricia Schrader, Teacher, Middlesex County Vocational & Technical Schools*  
*Dianne Veilleux, Assistant Superintendent, Middlesex County Vocational & Technical Schools*  
*Kathy Wilhelmy, Teacher, Middlesex County Vocational & Technical Schools*

Learn how the Middlesex County Academy for Allied Health and Biomedical Sciences incorporates Project Lead the Way (PLTW) into their Academy high school. The PLTW Biomedical Sciences program is a series of courses which utilize a project-based, collaborative problem-solving model. Teachers and students will demonstrate the program during the presentation.



## Supporting Students with Disabilities in Your Structured Learning Experiences (SLE) Program

**Presenters:** *Dan Baker, Ph.D., Associate Professor of Pediatrics, The Boggs Center, University of Medicine & Dentistry of New Jersey*  
*Bill Freeman, CSPD Coordinator, Office of Special Education, NJDOE*

In order to successfully participate in community-based SLE, many students with disabilities need more onsite support and supervision than is typically available from SLE coordinators and worksite mentors. In order to be successful in SLEs, these students, who often have more significant disabilities, need the support of a trained staff person known as a job coach. This session will focus on issues and strategies to promote quality performance of job coaches. Topics to be addressed include: job responsibilities, staff training needs, the use of natural supports, on-site and field supervision suggestions, and coordination of responsibility among different personnel. The audience for this training will be SLE Coordinators, CTE educators, and other school staff who work with students with disabilities.



## Two Birds with One Stone: CTE Program Development and Reapproval

**Presenter:** *Jeffrey Moore, Administrative Supervisor, Freehold Regional HS District*

Freehold Regional High School District will discuss its approach to CTE program development and program re-approval within the larger context of curriculum renewal, strategic planning, and the fulfillment of district goals. Presenters will share the development of the district's Culinary Academy reapproval application, as well as how that application served multiple school and district goals rather than progressing as "one more thing to do."



## Using STEM projects to go beyond the SAT

**Presenter:** *Charles Christoe, Ph.D., Teacher of Physics & Pre-Engineering, High Technology High School*

High Technology High School will share how pre-engineering projects, such as those suggested by Project Lead the Way (PLTW) for its Principles of Engineering course, are designed to teach a systematic approach to solving problems. Learn how to structure pre-engineering projects to include lessons that complement normal math and physics courses so that learners are encouraged to explore and apply concepts that enhance and extend the associated course content even beyond the SAT II level of competence.



## The Value of Career Technical Student Organizations (CTSOs)

**Presenters:** *Peter Carey, State Director, SkillsUSA, Raritan Valley Community College*  
*Patricia DiGioia-Laird, New Jersey FCCLA State Advisor, John P. Stevens High School*

State Advisors from Family, Career and Community Leaders of America (FCCLA) and SkillsUSA will share how CTSO activities aid students in applying and refining 21st Century Skills and discover their passion for a career focus. New Jersey SkillsUSA students who attended the 2011 WorldSkills Competitions in London, England and presented at the World Leaders Forum will discuss an international perspective on their CTSO experiences with emphasis on leadership training, character development, employability skills, and programs of study.



# WORKSHOP DESCRIPTIONS

## Concurrent Sessions 11:30 a.m. – 12:30 p.m.



### Achieve, Inc.

**Presenter:** *Kate Blosveren, Associate Director, Strategic Communications and Outreach, Achieve*

As states and districts begin to implement the Common Core State Standards (CCSS), teachers may need to redesign their lessons and classroom activities to ensure that course content is rigorous and aligned to the CCSS. To help teachers and education leaders address this challenge, Achieve and NASDCTEc have joined to pilot a process in which secondary and postsecondary educators develop and evaluate instructional tasks that demonstrate how high school mathematics expectations can be applied using Career Technical Education (CTE) content. Hear from Achieve, Inc. about the process, including their work with NJ mathematics and health science teachers, and future plans for using the protocol.



### Career Equity Resource Center - Ensuring Equity for All

**Presenters:** *Susan Bodofsky, Career Equity Resource Center, Center for Women & Work - Rutgers University*  
*Dr. Teresa Boyer, Career Equity Resource Center, Center for Women & Work - Rutgers University*  
*Glenda Gracia-Rivera, Career Equity Resource Center, Center for Women & Work - Rutgers University*

The Career Equity Resource Center at Rutgers University will explain how they can assist schools/districts by ensuring that all secondary and post-secondary students have equal access to high quality CTE programs. Best practices will be highlighted, such as the Step Up Project. Step Up is a call to action which engages students in the process of raising awareness on issues of equity in their schools/communities.



### CTE: Fine Tuning the Engine that Drives the U.S. Economy

**Presenter:** *Janet Bray, Executive Director, Association for Career and Technical Education*

As the U.S. economy struggles to recover to pre-recession levels, there has been a lot of focus on jobs creation, reskilling America's workforce and reforming our education system. CTE is the engine that drives this change and in the process, must change itself. Executive Director of the Association for CTE (ACTE) will provide an overview of changes being discussed at the federal level and how CTE can lead the dialogue. Trends that are impacting CTE including the integration of academics and CTE, Common Core State Standards and assessments, the meaning of "college and career ready" and the increasing role of national policy and how these changes are influencing the federal legislative activity will be addressed.



### CTE Partnership Grants in Business Management & Administration, Finance and Marketing Career Clusters

**Presenters:** *Ellen Benowitz, Project Director, CTE Partnership Grant, Mercer County Community College*  
*Til Dallavalle, Project Coordinator, CTE Partnership Grant, Middlesex County College*

Learn the latest from Mercer County Community College and Middlesex County College representatives on the development of model programs of study (POS) in the Business Management & Administration, Finance and Marketing career clusters. Model programs of study will be shared.

# WORKSHOP DESCRIPTIONS



## CTE Partnership Grant in the Human Services Career Cluster

**Presenters:** *Yvonne Kilson, Program Coordinator, CTE Partnership Grant, Camden County College*  
*Maureen Reidenauer, Program Coordinator, CTE Partnership Grant, Camden County College*  
*Margo Venable, Director, CTE Partnership Grant, Camden County College*

Camden County College representatives will share their goals and objectives for the CTE Partnership grant for the Human Services career cluster. Presenters will highlight how a model Program of Study is being developed through collaboration with stakeholders.



## The Danielson Framework for Teaching in Action: Observing CTE Alternate Route Teachers

**Presenters:** *Nancy Wheeler Driscoll, Teacher, Cape May County Technical High School*  
*Linda Milstein, Vice President, Outreach, Business and Community Development, Brookdale Community College*  
*Ronni Reed, Retired Educator, Monmouth County Vocational School District*

The NJ CTE Alternate Route Teacher Preparation Program utilizes Danielson's four domains to assess the development of key skills for these new teachers. Through handouts, mini-presentations and interactive exercises, you will learn from the Vice President Outreach, Business and Community Development at Brookdale Community College about the Framework, how the domains and their components form the basis of the CTE alternate route teacher observations and how to apply this tool.



## Developing Dynamic and Long Term Partnerships for Your SLE Program

**Presenters:** *Deborah Addas-Lillo, School-To-Career Coordinators/Consultant, Union City High School*  
*Janet Thomas, School-To-Career Coordinators/Consultant, Union City High School*

This workshop will explore Union City school district's two-tiered approach to Structured Learning Experiences (SLEs), and how to create a meaningful SLE for high school students. Specific examples of partnership development strategies with the private sector will be shared. Strategies will be presented for introducing community, administration and parents to the benefits of a structured learning experience.



## Developing & Implementing Dual/Concurrent Enrollment for a Program of Study

**Presenter:** *Alberta Jaeger, Assistant Dean of Academic Affairs, Sussex County Community College*

Representatives from Sparta High School and Sussex County Community College (SCCC) have collaborated to offer college credit for the Sparta High School Marketing Program of Study through the SCCC Dual/Concurrent Enrollment Program. A description of the process will be presented along with the challenges that the high school and college faced in developing and implementing this program.



## The Futurists: Collaboration, Innovation, and the Perkins Process

**Presenters:** *David Becker, Technology Manager, Bergen County Technical Schools*  
*Richard Panicucci, Assistant Superintendent of Curriculum & Instruction, Bergen County Technical*

The Assistant Superintendent and Technology Manager from Bergen County Technical Schools will share best practices for submitting a thorough and classroom-centered Perkins application. The discussion will focus on ways to use web-based applications to support more direct teacher participation, administrative over-site, and better alignment of budget and strategies. The presenter will also share a district initiative called "The Futurists" which is intended to help guide the Perkins process in an effort to promote more innovation and creativity.

# WORKSHOP DESCRIPTIONS



## New Jersey Key Industry Clusters and Talent Networks

**Presenter:** Robert Grimmie, Director, Center for Occupational Employment Information

NJ Department of Labor and Workforce Development experts will provide information on New Jersey's seven Key Industry Clusters and the related Talent Networks. These newly created Talent Networks will assist employers searching for qualified candidates by leveraging their experience, understanding of the ever-changing job market, and their access to New Jersey's training providers and educational leaders.

## Two Hour Breakout Session – Perkins Application Workshop 1:30 p.m. – 3:30 p.m.




### Perkins Grant Application Workshop

**Presenters:** Office of CTE Staff, NJDOE

There are significant changes in the Perkins application and process for FY13. It is highly recommended that at least one representative from school districts receiving Perkins funding attend this two hour workshop to hear about these updates. Additionally, you will learn about how your district can more effectively use Perkins grant funds to enhance the quality of your CTE program.

## Concurrent Sessions 1:30 p.m. – 2:30 p.m.



### Adapting a National Model for Program of Study Curriculum Development for New Jersey

**Presenters:** Martha McNulty, Director, CTE Partnership Grant, Raritan Valley Community College

Melinda Sherwood, Communications and Outreach Specialist, Raritan Valley Community College

Hear from Raritan Valley Community College on how they brought together statewide partners from secondary education, postsecondary education and business and industry to design rigorous, project-based, CTE curriculum aligned with Standard 9.4, Common Core State Standards and applicable industry standards. Presentation provides a description of the collaborative process, information gathered and an overview of the final curriculum.



### CTE: Fine Tuning the Engine that Drives the U.S. Economy

*(This is a repeat of the session offered from 11:30 a.m. – 12:30 p.m.)*

**Presenter:** Janet Bray, Executive Director, Association for Career and Technical Education

As the U.S. economy struggles to recover to pre-recession levels, there has been a lot of focus on jobs creation, reskilling America's workforce and reforming our education system. CTE is the engine that drives this change and in the process, must change itself. Executive Director of the Association for CTE will provide an overview of changes being discussed at the federal level and how CTE can lead the dialogue. Trends that are impacting CTE including the integration of academics and CTE, Common Core State Standards and assessments, the meaning of "college and career ready" and the increasing role of national policy and how these changes are influencing the federal legislative activity will be addressed.

# WORKSHOP DESCRIPTIONS

## CTSOs: Making an “Extracurricular” a “Co-curricular”

**Presenters:** *Brian Ducey, Agricultural Science Teacher, Freehold Regional School District*  
*John Neyhart, Teacher, Monmouth County Vocational School District*

CTSOs are dynamic student organizations that create synergies between students, advisors, community members and other stakeholders. They are student run organizations that allow for a place for students to use classroom instruction to make a positive impact on their schools, communities and potential careers. Come hear Freehold Regional HS outline the goals and benefits of CTSOs to all stakeholders.

## Culinology and Entrepreneurship

**Presenters:** *Frank Castella, D.C., Teacher of Biological Science, Bergen County Technical High School Teterboro Campus*  
*Richard Panicucci, Assistant Superintendent of Curriculum & Instruction, Bergen County Technical Schools*  
*Jayasree Sankar, Ph.D., Chemistry Teacher, Bergen County Technical High School, Teterboro Campus*

This presentation by Bergen County Technical Schools will walk participants through the planning, relationship building, and student activities involved in a project that challenged students to design and market original food products for pediatric oncology patients at Hackensack University Medical Center. This experience enabled students to integrate culinary arts, science, and entrepreneurship to ensure that products addressed the nutritional, sensory, and financial needs of a highly specialized target market.

## How to Impact Learning with CASE

**Presenters:** *Nan Hamilton, Teacher of AgriScience, Northern Burlington County Regional High School*

The CASE concept, with hands-on activities, projects and ongoing curriculum, prepares students for career exploration and the future while delivering rigorous and relevant outcome. This presentation by Northern Burlington High School will share CASE projects, teaching concepts, hands-on activities and end of course assessments.

## Literacy in Career and Technical Education

*(This one hour workshop is an abbreviated version of the two hour AM presentation.)*

**Presenter:** *George Johnson, School Improvement Consultant, Southern Regional Educational Board (SREB)*

This session will provide an overview of how to embed the Common Core State Standards for Literacy into CTE content areas. Sample tasks and experiences will be shared.

## Piloting the New Health Science Program of Study

**Presenters:** *Robert Berezny, Project Director, CTE Partnership Grant, Gloucester County College*  
*Antoinette Fugee, NJ HOSA State Advisor, Gloucester County College*

This presentation by Gloucester County Community College will focus on the accomplishments to date of the CTE Health Science Pilot Project addressing curriculum revision, next steps for Common Core State Standards, professional development and partnerships with post secondary institutions.

## Project-Based Learning for Every Cluster

**Presenters:** *Chris Anderson, Consultant, Center for Excellence in STEM Education, The College of New Jersey*  
*Cal Cizek, Curriculum Advisor, CTE Partnership Grant in STEM, The College of New Jersey*  
*Alison Goeke, Director, CTE Partnership Grant, The College of New Jersey*

Across all academic content areas and career clusters, project-based learning (PBL) shares a unifying characteristic: it seeks to engage learners in finding solutions to real-world, open-ended, design-based problems. Come hear from The College of New Jersey how The Engineering Design Process can be utilized by every CTE area of study to provide the necessary structure and organization for the development and implementation of PBL curricula.

# WORKSHOP DESCRIPTIONS



## Special Needs Students: From High School to College

**Presenters:** *Mary Beatty-Sharisky, Supervisor, Ocean County Vocational Technical School*  
*Frank Morelli, Supervisor/Coordinator, Ocean County Vocational Technical School*

Transitioning a special needs student from a high school classroom to a postsecondary apprenticeship program, while incorporating a structured learning experience, will be discussed by staff from Ocean County Vocational School District. This is accomplished via project based learning and collaboration with parents, administrations, educators, advisory committee members and community based employers that have successfully assisted students to transition into postsecondary programs.



## Transitioning to NJSMART in 2012-13

**Presenter:** *Bari Erlichson, Chief Performance Officer/Assistant Commissioner of Data, Research, Evaluation and Reporting, NJ Department of Education*

The NJ Department of Education Chief Performance Officer will discuss the transition of the secondary data collection to NJ SMART in 2012-13.



## Using NACEP for Benchmarking: A Standards Based Approach to Growing Dual Enrollment Partnerships

**Presenters:** *Nancy Jordan, Dean of Academic Programs and Partnerships, Raritan Valley Community College*  
*Margo Venable, Director, CTE Partnership Grant, Camden County College*  
*Darlene Yoseloff, Director, Office of School Relations, Middlesex County College*

Using the National Concurrent Enrollment Partnership (NACEP) standards as an organizing framework, a panel of community college administrators from Camden County College, Middlesex County College and Raritan Valley Community College with significant experience in dual enrollment partnerships will share institutional practices in the context of the program standards for curriculum, faculty, students, assessment and evaluation. Each panelist will share best practices, including what is working well and the challenges associated with implementation of the standards.

## Concurrent Sessions 2:30 p.m. – 3:30 pm



### Common Career Technical Core (CCTC) and Career Readiness Partner Council

*(This one hour workshop is an abbreviated version of the two hour AM presentation.)*

**Presenter:** *Dr. Dean Folkers, Deputy Executive Director, National Association of State Directors of Career Technical Education Consortium (NASDCTEc)/National Career Technical Education Foundation (NCTEF)*

In this one hour presentation by the Deputy Executive Director of the National Association of State Directors for CTE, the Common Career Technical Core and the Career Readiness Partner Council will be explained and some of the potential implementation strategies explored.



### Implementation of Engineering Programs in Urban School Districts

**Presenter:** *Victor Alegria, Engineering Teacher, Garrett Morgan Academy*

Garrett Morgan Academy in the Paterson School District will share its experience in implementing engineering programs. The workshop will focus on the successes, challenges and opportunities along this journey. Attendees will leave the workshop with a clearer understanding of how to implement successful engineering programs in an inner city school. The presenter is an engineer who is now teaching at the Garrett Morgan Academy.



# WORKSHOP DESCRIPTIONS



## Implementing Personalized Student Learning Plans

*(This is a repeat of the session offered from 9:30 a.m. – 11:30 a.m.)*

**Presenters:** *Lori Howard, Education Program Development Specialist, Office of CTE, NJDOE  
Diana Lobozzo, Pilot Coordinator - Personalized Student Learning Plan, Abraham Clark High School*

A Personalized Student Learning Plan is defined as a formalized plan and process that involves students setting learning goals based on personal, academic and career interests, with the close support of adult mentors. This workshop will highlight the implementation efforts of New Jersey's Personalized Student Learning Plan Pilot Program in the middle grades (6th - 8th) and high school (9th - 12th).



## Integrating Mathematics into CTE Programs

**Presenters:** *Katie Elko, Math Coach, Middlesex County Vocational & Technical Schools  
Paul Hankins, Math-in-CTE Coordinator, Middlesex County Vocational & Technical Schools*

Middlesex County Vocational School District will provide an overview of the National Research Center for CTE (NRCCTE)'s Math-In-CTE program. Currently there are 22 teams of teachers in New Jersey using the research-based curriculum model in the Business/Finance, Construction Technology, and Hospitality/Tourism career clusters. Hear from several teacher teams as they discuss how the Math-in-CTE enhanced lessons have helped make the connection between mathematics and CTE.



## Integrating Online Learning and Technology into CTE Programs

**Presenter:** *Kelly Pike, CTE Nurse Instructor, Hunterdon County Polytech*

This workshop will provide an overview of a Hunterdon County Vocational School District's experiences in integrating technology and online learning into a CTE Nursing program. The teacher will share specific strategies, activities and applications that can easily be adapted to any CTE program to provide creative learning opportunities, integrate 21st Century Skills, engage students, increase student achievement, and enhance instruction.



## The NJ Safe Schools Program

**Presenter:** *Derek G. Shendell, D.Env, MPH, Assistant Professor; Director, NJ Safe Schools Program; and  
CSCBRE Co-Director, UMDNJ-School of Public Health*

The NJ Safe Schools Program assists schools in reducing risk to occupational safety and health hazards in secondary school and work microenvironments in which NJ adolescents spend time. Participants will hear an overview presentation from UMDNJ staff responsible for the Safe Schools program in NJ, including injury reporting requirements for CTE SLEs. Participants will take part in brief, focused discussions via small group activities based on the "Youth at Work" Talking Safety curriculum. Opportunity to enroll in the NJ Safe Schools and NJDOE-OCTE SLE listservs to receive e-newsletters and other free online resources will be provided.



## Pathways to Biotechnology: A Link between Secondary and Postsecondary Biotechnology Education

**Presenters:** *Dr. Parag Muley, Associate Chair, Department of Natural Sciences, Middlesex County College  
Dr. Uma Narayanan, Assistant Professor, Middlesex County College*

Middlesex County College faculty will discuss "Pathways to Biotechnology", a joint admission program which will allow Middlesex County high school students to register in the MCC Biotechnology Program in their junior year of high school. Students will have an opportunity to earn 18-26 transfer credits towards the Biotechnology AS degree while they are in high school with the possibility of achieving a BS degree in 3 to 3 1/2 years! This program can serve as a collaborative model for seamless transfer of students between New Jersey high schools, county colleges and four-year postsecondary institutions.

# ABOUT THE PRESENTERS



## **Deborah Addas-Lillo and Janet Thomas**

have extensive career and technical education experience. For the past 16 years, they have been co-coordinators of the School-to-Career Program in the Union City School District. During their tenure, they expanded their program and successfully placed many student-interns into professional job sites at law firms, medical offices, banks, and other locations. They have served on the Executive Board of Career Coordinators of New Jersey and the Hudson County Cooperative Business Education Association. They received three New Jersey Best Practice Awards in the areas of: School-To-Work/Workplace Readiness – Cooperative Business Education Program in 1997; Public Engagement – Summer Scholars in 1999; and Educational Technology – Honors Computer Application Mentoring Program in 2000.

**Victor Alegria** is the Engineering teacher at Garrett Morgan Academy (GMA). In this position he is the Project Lead the Way (PLTW) instructor of Principles of Engineering, Digital Electronics and Introduction to Engineering Design. For the past ten years Victor has been involved with engineering initiatives such as Project Based Learning, Summer Transportation Institute, Engineering Club, Computer Club and Robotics. Mr. Alegria received Bachelor of Science and Master of Science degrees in Industrial Engineering from San Agustin National University, Arequipa, Peru. He received a Master of Science degree in Industrial Engineering from Rutgers University in 2002, and a Master of Science degree in Statistics in 2003.

**Chris Anderson** has been a consultant with the Center for Excellence in STEM Education at The College of New Jersey since 2007, and has served as an adjunct professor for the Department of Technological Studies in the School of Engineering since 2006. Chris graduated from The College of New Jersey in 2002, and earned his master's degree in Educational Leadership from the University of Pennsylvania in 2006. He currently has 10 years of teaching experience in the field of K-Graduate Technology & Pre-Engineering Education, and served as the President of the New Jersey Technology & Engineering Educator Association (NJTEEA) from 2008-2011. For the last four years, assisted by undergraduate students from The College's M-S-T and Technological Studies programs, Chris has implemented a STEM summer camp within the Boys & Girls Club of Trenton/Mercer County. He is currently the Chair of the STEM Advisory Committee for the Career & Technical Education Partnership (CTEP) grant at The College of New Jersey, and is helping to develop a STEM program of study in Engineering & Technology.

**Dan Baker, Ph.D.** is Director of Community Positive Behavior Support, Transition, and Supported Employment Projects, and Associate Professor of Pediatrics at the Elizabeth M. Boggs Center on Developmental Disabilities. Dr. Baker's focus at The Boggs Center is on positive behavior support, models of community and educational support, transition services, and mental health services for persons with disabilities. Dr. Baker earned his Ph.D. in Educational Psychology in 1992 and a Teaching License in 1990 from the University of Minnesota. He has worked with people with a range of disabilities; his applied work includes efforts in schools, residential settings for people with disabilities, recreational programs, and employment supports. Dr. Baker is well published in both edited books and literary journals. His contributions earned him the 2010 Clinical Practice Award from NADD, an international professional association dedicated to advancing mental wellness for persons with intellectual or developmental disabilities.

## ABOUT THE PRESENTERS

**Mary Beatty-Sharisky** is the District Supervisor for Ocean County Vocational Technical Schools and has twenty-nine years of service as a former teacher of communications, English and Theater, Guidance Counselor and School Administrator. Her present duties include Perkins Coordinator, Program Re-approvals, NJQSAC Committee/Coordinator, Middle States Evaluation Team, Middle States Steering Committee, Supervisor of Internship/Practicum candidates, Middle States Information Technologies Cluster Coordinator, Professional Development Committee, student statistical data (VEDS, NJSMART, IPEDS), YTTW Consortium, Affirmative Action Building Rep., Character Education Coordinator, Communication Task Force, Equity Committee, School Building Security Team, District Technology Committee, Ocean County Tech Prep, Mentor – new staff members, Building Liaison for District Referral Services via CIACC, Learn and Serve Liaison, Scholarship Committee, and Building Coordinator for student participation in New Jersey SkillsUSA (District, State, and National).

**David Becker** is a Technology Manager for the Bergen County Technical School District. He has worked in the District for 17 years in varying roles including positions as Instructor of CAD, Computer Animation and Virtual Reality; Project Manager for web systems development; Technology Helpdesk Manager; and Manager of the Nano-Scale Imaging Laboratory. He has worked with the Perkins grant for the past eight years and has coordinated development of the District's online, "Perkins Request Portal".

**Ellen Benowitz** is a full-time professor at Mercer County Community College. She has served as New Jersey State Chairman for Future Business Leaders of American-Phi Beta Lambda since 1995. Ellen received her Bachelor's Degree in Business Education and Masters Degree in Business Education from Trenton State College (now The College of New Jersey). In addition, she completed 30 credits in Adult Education in the Nova University Ed.D. program. Professor Benowitz has been employed at Mercer County Community College since 1972 and has served in several administrative positions. She provided instruction in the areas of accounting, business organization, business communications, human resource management, business math, management and marketing. She is a corporate trainer and author of *Principles of Management*.

**Robert Berezny** is the Director of the CTE Partnership grant in the Health Science career cluster at Gloucester County College. He was formerly the Manager of the Bureau of Adult Education and Family Literacy/GED in the NJ Department of Education. He is a former State Administrator for GED Testing and member of the General Educational Development Testing Service Advisory Board. Bob also oversaw the operations of the Private Vocational Schools and Teacher Licensing areas of the Department. Bob received his Master's of Education in Curriculum and Instruction, and is currently pursuing a second Masters in Management from Thomas Edison State College.

**Kate Blossveren** is Associate Director, Strategic Communications and Outreach, Achieve, Inc. She leads research in the areas of policy and advocacy, supporting Achieve's and the American Diploma Project network's strategic communications efforts in support of the college- and career-ready agenda. Kate joined Achieve in June 2006 as a Policy Analyst. Before joining Achieve, she was a policy advisor at Third Way, where she acted as a policy liaison between the organization and its Corporate Leadership Committee, engaging on a very broad legislative agenda. Prior to her work at Third Way, Kate was a research assistant at the Progressive Policy Institute, focusing exclusively on education policy issues. Kate received her bachelors' degree in urban and regional studies from Cornell University. She received her master's of public policy from the Georgetown Public Policy Institute, where she wrote her thesis on the relationship between high school curriculum and college enrollment rates.



## ABOUT THE PRESENTERS

**Susan Bodofsky** is the Senior Program Coordinator for the Career Equity Resource Center (CERC) at the Center for Women and Work at Rutgers University. Susan's work focuses on the CERC grant, providing professional development, workshops, and technical assistance targeting career and technical education. Prior to coming to the Career Equity Resource Center, Susan worked for both the Edison Public Schools and the Elizabeth Public Schools as a School Social Worker. She also has worked with New Jersey Family, Career, and Community Leaders of America over the past 10 years. Susan holds both a bachelor's in social work from Georgian Court University and a master's in social work from Monmouth University.



**Teresa Boyer, Ed.D.** is the Executive Director of the Center for Women and Work at Rutgers University. Her areas of expertise include gender equity in education and career development, including classroom interactions, Title IX, women in science, technology, engineering and mathematics (STEM), nontraditional careers, sexual harassment, and gendered violence. Her service positions include seats on several advisory councils, including the NJ Department of Education's Career and Technical Education Advisory Council. She is an elected member of the National Alliance for Partnerships in Equity (NAPE). She holds a doctorate in Education from The University of Alabama, a master's degree in Higher Education Administration from the University of Alabama, and a bachelor's degree in Secondary Education from Villanova University, where she also received the Villanova Medallion for Excellence in Education.

**Janet Bray** serves as the Executive Director of the Association for Career and Technical Education, a not-for-profit association representing over 30,000 professionals across the United States. As Executive Director, Janet manages the staff and oversees the development of program services for the members of the association and the CTE profession. She provides leadership on a broad spectrum of education and workforce issues and directs the strategic public policy and public awareness efforts of the association. Janet holds a bachelor's degree in History and Government from the University of Maryland and a master's degree in Adult Education from the George Washington University. Janet earned her Certified Association Executive (CAE) credential in 1991 and is a member of the distinguished ASAE Fellows Group.

**Christopher Callahan** is a physics teacher at Bergen County Technical Schools. In collaboration with Mr. Timothy P. Regan, Electrical Design Instructor, he is integrating the New Jersey Green Program of Study into his Physics Course. This has proven to be a winning combination accepted enthusiastically by the school community. He is a graduate of Caldwell College with a Bachelor of Arts in Psychology. Mr. Callahan earned a Teacher of the Handicapped Certification followed by a Master of Arts in Teaching from Montclair State University. He then continued his education to receive a Teacher of Physics Certification in 2011 from Kean University.

## ABOUT THE PRESENTERS

**Peter Carey** is the State Director for the New Jersey Association of SkillsUSA. He has served in this capacity for seventeen years. He has been actively involved in SkillsUSA since 1975, and has been an administrator in a variety of vocational training settings since 1978, including the public, private, and non-profit sectors. For the past 21 years, he was employed at Somerset County Vocational Technical High School as Director of Student Services. He currently serves as the State Director for SkillsUSA under the CTE Partnership grant at Raritan Valley Community College.

**Frank Castella, D.C.** is an instructor of Biological Science at Bergen County Technical High School in Teterboro. He worked in private practice as a chiropractor from 1990 through 2003, gaining his teaching certification in Biology through the Alternate Route Program in 2003. He has worked on several curriculum projects including a dual enrollment Anatomy & Physiology course with Fairleigh Dickinson University. Dr. Castella received his B.S. in Biology from Saint Peter's College and a Doctor of Chiropractic from New York Chiropractic College.

**Charles Christoe, Ph.D.** is a teacher at High Technology High School in Lincroft, NJ. After earning a B.S. degree in Engineering Physics and a Ph.D. in experimental solid state physics from the University of Illinois in 1969, Dr. Christoe served a post-doctoral research assistantship at the Technical University of Munich, Germany. In 1972, he taught physics for one semester at the University of the Bosphorus in Istanbul, Turkey, before joining the Feltman Research Laboratory at Picatinny Arsenal in New Jersey as a civilian employee of the Department of the Army. In 1978, Dr. Christoe left government service to become a systems engineer at AT&T Bell Laboratories. He left what had by then become Lucent Technologies in 2001 to follow the alternate route to certification as a teacher of Math and Science in the State of New Jersey. He began his career in secondary education teaching freshman math at Piscataway Township High School. Since the fall of 2002, Dr. Christoe has taught Principles of Engineering and AP Physics C at High Technology High School. He was named "Teacher of the Year" at "High Tech" in 2005.

**Cal Cizek** served 23 years as a school administrator at the Gateway Regional School District in Woodbury Heights, NJ. During his tenure at Gateway Regional, he was the instructional supervisor for Technology Education where he assisted in the redesign of the Technology Education program. In addition, he has worked as an educational specialist with RCA Corporation in Cherry Hill on a government contract that analyzed the training programs of over a 100 military vocational and technical specialties. Mr. Cizek has a master's degree from Temple University as a Curriculum Specialist in Vocational-Technical Education (CTE). He currently serves on the STEM Advisory Committee for the Career & Technical Education Partnership (CTEP) grant at The College of New Jersey, acting as a curriculum advisor for the development of a STEM program of study in Engineering & Technology.

**Til Dallavalle** is the Project Coordinator for the Career and Technical Education Partnership Grant – Marketing Cluster, at Middlesex County College in Edison, NJ. He began this position in 2010 after a 30 year career in industry and education. Mr. Dallavalle taught in Marlboro, Berkley Heights, Carteret, and Perth Amboy. His industry experience, working with leading NJ based, global companies included Telcordia Technologies Inc. (formerly Bellcore), Flexi-Van Financial Services, Johnson and Johnson, and Electronic Data Systems (EDS). While working for the Carteret Board of Education, he developed district wide curricula, online resources for teachers, and provided professional development/instructional coaching that resulted in improving NJASK scores by 16%. Mr. Dallavalle received a B.S. degree in Mathematics from Seton Hall University, in South Orange NJ, and an M.S. degree in Telecommunications Management and Computing from Polytechnic University, White Plains, NY.



## ABOUT THE PRESENTERS



**Patricia DiGioia-Laird** has been the State Advisor for New Jersey FCCLA for 16 years and has been teaching Family and Consumer Sciences for 30+ years. Patricia graduated from Rutgers University with a Bachelor of Science degree in Home Economics Education and was awarded a Master's degree in Administration and Supervision by the Rutgers School of Education.

**Christopher DiMeo** has coordinated the Youth Transition to Work (YTTW) Program at the NJ State Building & Construction Trades Council for the past three years, assisting graduating high school seniors throughout New Jersey in their pursuit to an apprenticeship program with a construction trade. Christopher has also coordinated such programs as NJ Helmets to Hardhats, transitioning our nation's veterans into the trades, and Highway Construction Trades Training Program for Women and Minorities. Christopher received his BS degree from Rutgers University in 2007.

**Nancy Wheeler Driscoll** has worked in education for more than 32 years, with 26 years as a high school CTE teacher of Communications in Cape May County. Nancy also supervises that district's twilight tutoring program, evening adult programs and is a graduate professor for Seton Hall University. She is one of the original members of the Curriculum Committee for the CTE Alternate Route Provisional Teacher Pilot Program and has instructed for that program since its inception.

**Brian Ducey** is a teacher of Agricultural Science in the Freehold Regional School District. He holds two certifications: Agriculture and Biology. He has also been a FFA advisor and has coached 9 National FFA Career Development Contestants. He is a graduate of West Milford High School and Rutgers University, where he graduated with a degree in Plant Science. Brian spent eight years working in the Golf and Turf Management industry as an Assistant Superintendent in New Jersey, Virginia and Ireland. Mr. Ducey was also employed by Rutgers University in various positions at their research farms.

**Kay Eaton** is the Director of Grants and Special Projects at Mercer County Community College. Ms. Eaton has held several development positions within the College Advancement division during the past ten years. Prior to coming to Mercer, Ms. Eaton served in counseling, administrator and community outreach positions at Syracuse University and Princeton University. She also has held similar positions with both large state-wide agencies and small agencies in New Jersey and Pennsylvania. She received her MS in Counseling from Syracuse University, where she also received a Certificate in Gerontology. Ms. Eaton currently serves as an instructor and advisory committee member for Mercer's Certificate in Gerontology program. She holds a B.A. in English from Hartwick College in upstate New York.

## ABOUT THE PRESENTERS

**Bari Erlichson, Ph.D.** is currently Assistant Commissioner at the New Jersey Department of Education. As Chief Performance Officer, she oversees school and district performance and accountability, the development of the state's student-level, longitudinal data system, and research and evaluation efforts. A former professor at Rutgers University, Dr. Erlichson has conducted research in many topic areas, including school reform, education policy implementation, school funding, and governance. She is a co-author of the book, *Multiethnic Moments: the Politics of Urban Education Reform* (Temple University Press, 2006), as well as a contributor to several edited volumes and journals. Prior to joining the department, she taught fifth grade in Plainfield following student teaching in the Newark Public Schools. Bari holds a Ph.D. in Political Science from Stanford University, an M.A. in Education Administration and Policy from the Stanford School of Education, and a B.A. from Dartmouth College.

**Katie Elko** is a Math Facilitator for the NJDOE Math-in-CTE program at Middlesex County Vocational Technical Schools (MCVTS). She joined the project this year in order to align mathematics lessons to the Common Core State Standards and create a Wiki page for the sharing of the lessons. Katie was a math teacher for 10 years, spending eight of those years at Middlesex County Vocational Technical Schools. She is also a part time guidance counselor at the MCVTS Perth Amboy campus. Katie holds a certificate as Teacher of Mathematics, School Counselor, and Supervisor. She earned her Bachelor of Science in Mathematics from St. Bonaventure University. She later earned her Master of Arts in Education from Georgian Court University and attended both Monmouth University and Kean University for post-master certificate programs for School Counseling and Supervisor, respectively.

**Jennifer Frank, Ph.D.** has been part of the MCVTS Woodbridge Academy for the last 3 years and is a UMDNJ adjunct currently teaching Biology, Anatomy & Physiology, and Clinical Research. She has taught numerous courses at the college level including biology for science majors, Ecology and Human Biology. She received a B.S. in Biological Sciences from the State University of New York at Albany.

**Antoinette Fugee** is NJ HOSA State Advisor/Program Manager for the CTE Partnership Grant: Enhancing Teaching and Student Leadership in the Career Cluster of Health Science. She has been with the organization for five years. Prior to her position with NJ HOSA, she was the Director of Career Services with Prism Career Institute, Cherry Hill, NJ. She is a graduate of Montclair State University with a B.F.A., Cum Laude, Theatre Arts with a minor in Speech Communications and Communication Studies.

**Dean Folkers, D.M.** serves as the Deputy Executive Director for the National Career Technical Education Foundation (NCTEF) and the National Association State Directors Career Technical Education consortium (NASDCETc) located in Silver Spring, Maryland. Dr. Folkers' responsibilities include a focus on the vision, mission, and goals of the NCTEF board, overseeing the operations of the National Career Cluster Framework that includes products and professional development, fostering industry partnerships, and managing projects that advance the efforts of Career Clusters™ and Career Technical Education.

**Alison Goeke** is the Director of the statewide Career & Technical Education Partnership (CTEP) grant, which provides quality professional development, curriculum, online tools and other resources for students and educators in STEM programs of study. Alison is also the State Director for the New Jersey Technology Student Association (NJ TSA), a Career and Technical Student Organization (CTSO) with over 12,000 middle and high school student members. In June 2011, Alison was elected to a three-year term on the National TSA Board of Directors. She holds master's degrees in Elementary Education and Educational Technology from The College of New Jersey. She received her bachelor's degree in Behavioral Science from Drew University.

## ABOUT THE PRESENTERS

**Glenda Gracia-Rivera** is the Associate Director of Education and Career Development Programs at the Center for Women and Work, Rutgers University. In this role, she is responsible for directing many of the Career Equity Resource Center's programs and services. Glenda's work focuses on issues of equity and diversity in education and career development through professional development and training, curriculum development, student programming, and provision of technical assistance. In addition to this, she also has an extensive background in program development and management. She holds both a Bachelor of Arts in Sociology, and a Master of Public Administration in Non-Profit Management, from Seton Hall University.

**Robert Grimmie** is the Director of the Center for Occupational Employment Information (COEI) in the Office of Labor Planning and Analysis within the New Jersey Department of Labor and Workforce Development (NJLWD). The COEI manages several key aspects of New Jersey's workforce investment system including the Eligible Training Provider List (ETPL), online Consumer Report Card (CRC) and New Jersey Career Assistance Navigator (NJCAN) website. These systems are used by prospective students to research the performance history and program details of training opportunities in their area of interest. Prior to joining the NJLWD in 2011, Mr. Grimmie spent 13 years in Human Resources with New Jersey-based corporations in the Financial Sector where he contributed in all areas of the human resource function with emphasis on recruiting and staffing, organizational development, as well as training and development.

**Nan Hamilton** is an instructor of Floral Design and Landscaping, Advanced Floral Design, Biology of AgriScience, and CASE – Plant Science, and an FFA Advisor at Northern Burlington County Regional High School. She received a B.S. in Animal Science with a minor in Equine Science from Rutgers University/Cook College in 1978. She went on to obtain Teacher of Agriculture and Teacher of Science (K-12) certifications. Her career as an educator began teaching courses in Introduction to Physical Sciences, Physics and Horticulture. She then pursued a 15 year career in Floral Design at South Flower Market in NYC as a floral designer, the Sunshine Bouquet Company in NJ as Floral Sales/Manager and as a business owner of a floral business in Point Pleasant Beach, NJ, before returning to the teaching profession at Northern Burlington eleven years ago.

**Paul Hankins** is currently serving as the Math-in-CTE Facilitator, working in collaboration with the NJ Department of Education presenting the model to CTE educators throughout the state in various career cluster content areas. For the past four years, he has been on special assignment presenting the Math in CTE model to CTE teachers in his home district at Middlesex County Vocational Technical Schools. Paul has been a lead facilitator of the NRCCTE Math-in-CTE model in eight states nationwide. Before his involvement with Math-in-CTE, Paul was a teacher of Automotive Technology. Paul holds a Bachelor's Degree in Vocational Education and a Master's Degree in Education Administration /Supervision. For the past fourteen years he has also held the position of Principal of Adult Education at the Piscataway Campus of the Middlesex County Vocational and Technical Schools.

**Alberta Jaeger** has been the Assistant Dean of Academic Affairs at Sussex County Community College since September 2008. She is responsible for developing and implementing Dual/Concurrent Enrollment in the high schools throughout Sussex County.



## ABOUT THE PRESENTERS

**George Johnson** is in his third year as a school improvement consultant for the Southern Regional Educational Board (SREB) and the High Schools That Work Program (HSTW). As a consultant to New Jersey Schools he has worked with more than a dozen schools across the state to teach educators and school leaders about the Key Practices of High Schools That Work. During the past year, George has presented throughout New Jersey school districts on improving literacy in CTE classes to meet the Common Core State Standards for Literacy in Technical Subjects.

**Nancy Jordan** is a long-standing community college educator with a wide range of administrative experience in the areas of academic affairs, student services and resource development. In her current role as Dean of Academic Programs and Partnerships, she provides leadership for high school outreach programs, including concurrent enrollment.

**Yvonne Kilson** is a Coordinator for the Career Technical Education Partnership Grant, Human Services Career Cluster at Camden County College. She has over 12 years of continued service at Camden County College in postsecondary education assisting students with academic and career development. Yvonne has also done extensive work with the Federally Funded TRIO program, Student Support Services, which assists and supports first generation, low income and students with disabilities to succeed in the college environment. Yvonne is also an Adjunct Instructor with Camden County College in the Marketing and Business departments. She holds an M.A. degree in Organizational Development from Antioch University and a B.A. degree in Psychology from Temple University.

**Diana Andreopoulos Lobozzo** is currently employed in the Roselle School District as Coordinator of the Personalized Student Learning Plans (PSLP) Pilot Project at Abraham Clark High School, New Teacher Induction Program and Health Occupations and Director of High Schools That Work. She has been a leader in the field of education in implementation of Interactive Distance Learning Programs, Health Sciences Careers Programs and the development of partnerships with health care organizations in New Jersey. She has served on the PSLP Advisory Committee for the NJ Department of Education and is currently a Coordinator of the PSLP for Abraham Clark High School. Diana has been the recipient of numerous awards for her dedication to the fields of education and service to the community.

**Linda Martin, Ed.D.** is the Dean of Math, Science and Health Professions at Mercer County Community College. Dr. Martin has been with the College for the past 7 years, serving in the roles of Director of Nursing Education and Division Dean. Dr. Martin is also an instructor and advisory committee member for Mercer's Certificate in Gerontology program. Prior to her position at MCCC, Dr. Martin directed the Accelerated Second Degree B.S.N. program at the University of Medicine and Dentistry of New Jersey. In addition to her academic experience, Dr. Martin is a licensed advanced practice nurse in New Jersey and Pennsylvania. Her specialty is Gerontology. She received her B.S.N. from Trenton State College, her M.S.N. from Rutgers University, and her Doctorate in Higher Education Leadership from Nova Southeastern University.

**Martha McNulty** began teaching and developing curriculum in career and technical education after holding positions in tool design and manufacturing process engineering in the aerospace industry. She has provided academic support and directed student success initiatives at the community college level, and currently serves as Director of the Career & Technical Education Partnership at Raritan Valley Community College in the department of Academic Programs and Partnerships. Martha holds a bachelor's degree in Mechanical Engineering and a master's degree in Technical Communication.



## ABOUT THE PRESENTERS

**Todd Menadier** is an Energy teacher at Essex County Vocational School District's Bloomfield Campus. After graduating from The College of New Jersey, he spent three years traveling and working abroad. During that time he taught in Thailand and Spain and spent a year in Australia before settling back in New Jersey in 2006. In 2008, with the support of PSEG, he initiated the four year innovative Green Energy Academy as part of a Career and Technical Education program of study. He is currently pursuing his master's degree in Power and Energy Systems Engineering at New Jersey Institute of Technology.



**Linda Milstein, Ed.D.** is the Vice President for Outreach, Business and Community Development at Brookdale Community College. She has led the development and implementation of the CTE Alternate Route Provisional Teacher Pilot Program, and played a leadership role for 10 years in the New Pathways to Teaching in NJ alternate route program, a statewide program delivered through a partnership between the state's community colleges and New Jersey City University.

**Jeffrey Moore** is the Administrative Supervisor for Curriculum and Instruction, and the Strategic Planning Internal Coordinator for the Freehold Regional High School District. He has been employed at the district since 1995, originally as a social studies educator and then as an educational technology specialist. Throughout his career, Mr. Moore has presented locally and regionally on such topics as: data-driven decision-making, curriculum development, technology integration, and 21st century teaching and learning. Mr. Moore earned his M.A. in Educational Supervision and Administration from Rutgers University. He now continues his graduate studies with Rutgers, and is at work on his doctoral dissertation. He is researching teacher perceptions and use of data-driven decision-making.

**Frank Morelli** is a Cooperative Education Coordinator, Apprenticeship Coordinator, supervisor and SkillsUSA advisor at the Ocean County Vocational Technical School. He has received degrees from Brookdale Community College and The College of New Jersey. He has experience as a high school automotive teacher and as an adjunct professor at Brookdale Community College from 1986 – 2010. All of his experiences have helped him foster growth in hundreds of students who learned a trade, from getting their first step into the job market and developing lifetime workplace skills.

**Tiffany Morey** is the Agricultural Science teacher for the Essex County Vocational Technical School District (ECVTS) at the West Caldwell Tech campus. In 2010-2011, she piloted the Curriculum for Agricultural Science Education (CASE) Intro to Agriculture, Food, and Natural Resources (AFNR) curriculum at ECVTS. In 2010, she was the recipient of a CASE Institute Scholarship from the National Association of Agricultural Educators. She is an active member of the New Jersey Association for Agricultural Educators, where she serves as the Northern Region Vice President and has served as an article author for The Agricultural Education Magazine. She received a Bachelor of Science in Animal Science from Rutgers University/Cook College, and a Master in Agricultural Science Education from the Rutgers Graduate School of Education.



## ABOUT THE PRESENTERS

**Parag Muley, Ph.D.** is the Associate Chair of Biology in the Department of Natural Science at Middlesex County College. After obtaining his B.S. and M.S. in Zoology from University of Delhi, India, he was a field biologist studying ecology and management of Asian wild water buffaloes (*Bubalus bubalis*) in India. He then pursued a Ph.D. in Animal Sciences from University of Wisconsin at Madison, working on a research project studying the population genetics and morphology of water buffaloes. He also worked as research associate in the Department of Biochemistry at University of Wisconsin. Dr. Muley's major topic for post-doctoral research was characterization of vitamin A induced genes in early vertebrate brain development.

**Jeanine Nagrod** is the Executive Director of New Jersey Pathways Leading Apprentices to a College Education or NJ PLACE, located at Rutgers' University College Community. Jeanine holds a Bachelor of Arts from Tufts University and a Master of Labor and Industrial Relations from Rutgers University. During her 16-year career she has been a union organizer, strategic researcher, program director, and grant specialist. Over the past decade, Jeanine has worked on initiatives with the apprenticeship communities in Washington DC and New Jersey, including youth-focused education and outreach initiatives. She has extensive experience working collaboratively with workforce development, two- and four-year colleges, labor unions and labor-management training funds.

**Uma Narayanan, Ph.D.** is a Biotechnology Program Coordinator and Biology Faculty at Middlesex County College, NJ. She joined Middlesex County College in 2004 and has several years of teaching experience at four-year institutions and community colleges. She initiated and developed Biotechnology A.S Degree program at Middlesex County College which articulates with Rutgers, St. Peter's College and NJIT. She received funding for BIO-1- WIRED Grant proposals titled "2+2 Biotechnology program transfer and articulation" and "New Jersey Biosciences Forum for developing and transforming biosciences pipeline", 2009-2010. Her interest in providing hands-on laboratory experience to students comes from her graduate work at University of Madras, India, extensive post doctoral work at School of Medicine and Dentistry, University of Rochester and New York and University of Medicine and Dentistry, Rutgers, The State University of New Jersey.

**Bruce Negri** is new on staff with the United States Department of Labor, Office of Apprenticeship in the capacity of Apprenticeship and Training Representative, responsible for promoting, registering and monitoring registered apprenticeship programs in six counties in the state of New Jersey. Prior to joining the U.S. Department of Labor, Bruce served as the County Apprenticeship Coordinator for the county of Middlesex and was a Supervisor of Adult Education at Middlesex County Vocational and Technical Schools.

**John Neyhart** is a teacher and an FFA Advisor in the Monmouth County Vocational School District. Formerly, he was an Advisor for the National Council for Agricultural Education Landscape, Lawn Care and Golf Course Management and the President of the New Jersey Association of Agriculture. He graduated with a Bachelor of Science in Ornamental Horticulture from Delaware Valley College of Science and Agriculture in Doylestown, Pennsylvania. He possesses a teaching certificate in Agriculture Operations and Landscaping and has taken graduate courses through Jersey City State College.

**Richard Panicucci** is the Assistant Superintendent of Curriculum and Instruction for the Bergen County Technical Schools and Special Services. Over the past 19 years, he has served as a teacher, administrator, and educational consultant in the field of career and technical education. He was heavily involved in development of the Bergen County Academies in the early 1990's and has since worked toward the integration of the International Baccalaureate Diploma Program into CTE Programs of Study.

## ABOUT THE PRESENTERS



**Kelly Pike** is a CTE Instructor that has taught the Hunterdon County Vocational School District's Nursing Program for the last several years. She was instrumental in developing the program and has actively implemented technology into the program. Her curriculum has transformed into an online format to provide students with a 24 hour access to all of the classroom materials and activities. Professionally her background in obtaining her bachelor's degree from the University of Phoenix has given her the skills and desire for online learning. Since then she has acquired her School Nurse Certification from the NJ City University and most recently had taken the exam to become a Certified Health Education Specialist. Her credentials consists of numerous health related certifications and years of experiences in a variety of health care settings.

**Ronni Reed** recently retired from Monmouth County Vocational School District, where she served as Staff Development Leader. For thirty years, Ronni facilitated learning in the areas of school improvement, quality professional development, evaluating impact and results, leadership development and instructional improvement. Ronni is one of the original members of the Curriculum Committee for the CTE Alternate Route Provisional Teacher Pilot Program and has carried out observations of students in the program.

**Timothy Regan** is the Electrical Design Instructor at Bergen County Technical Schools Paramus campus. He also teaches electrical classes at the Bergen County Technical Schools adult school. Timothy is the recipient of the Bergen County Technical Schools Paramus campus "Teacher of the Year" award. He is a master electrician operating a business for 22 years. A graduate of Saint Mary's High School in Rutherford, he earned his electrical Inspector ICS and HHS certification from Bergen Community College and his teacher of electrical trades certification from Saint Peter's College alternate route program.

**Maureen Reidenauer** is the Program Coordinator for the CTE Partnership Grant: Human Services Cluster at Camden County College (CCC). Prior to this position, she was the Program Director for both the Dietetic and Hospitality Technology Career Programs at CCC. Maureen has been recognized as Outstanding Dietetic Educator of the Year by the American Dietetic Association and has authored a nutrition textbook with Cengage Publishers.

**Jayasree Sankar, Ph.D.** has taught Chemistry at the high school, undergraduate, and graduate level for the past fourteen years. She has spent the last eight years teaching at the Bergen County Technical High School in Teterboro. Dr. Sankar has an M.S. in Organic Chemistry and a Ph.D. in Material Chemistry. She has conducted research in the area of anti-cancer studies of organometallic compounds and various south Indian spices.

**Judy Savage** is the Executive Director of the New Jersey Council of County Vocational-Technical Schools where she works closely with the 21 county vocational-technical school districts to provide advocacy and support for career and technical education in New Jersey. She has collaborated with the NJ Department of Education on the effort to develop a model Green Program of Study that can be implemented by school districts throughout New Jersey. Before joining the Council in 2001, Ms. Savage worked in multiple capacities within state government, including education policy advisor in the Governor's Office, policy and public affairs for the Commission on Higher Education, and school finance, government relations and communications positions at the Department of Education.

## ABOUT THE PRESENTERS

**Donna Scalia** has been on staff with the U.S. Department of Labor, Office of Apprenticeship for seventeen years in the capacity of an Apprenticeship & Training Program Specialist, responsible for promoting, registering and monitoring registered apprenticeship programs in eight counties in the State of New Jersey. Prior to joining the U.S. Department of Labor, Donna was the Assistant Training Director of the Morris/Sussex/Warren local of the International Brotherhood of Electrical Workers. Donna served on the New Jersey Gender Equity Advisory Committee from 1989 to 2006.

**Patricia Schrader, M.D.** has practiced medicine since 1987 specializing in traumatic and critical care. She is adjunct faculty at UMDNJ, teaching Biological Science courses. She is a PLTW teacher at the Middlesex Academy for Allied Health.

**Laurel Shaffer** is the Director of UNITE HERE! Local 54's Youth Transition to Work Program. Her background includes 18 years of service at Harrah's Hotel & Casino in the positions of casino games scheduler, special events representative, senior executive secretary and human resources representative. Her previous experience helped Laurel develop skills to guide young adults into meaningful careers in the culinary arts industry.

**Derek Shendell, D.Env, M.P.H.** is an Assistant Professor in the Department of Environmental and Occupational Health at the School of Public Health at the University of Medicine and Dentistry of New Jersey (UMDNJ). He is also on the graduate faculty of Rutgers University and a member of the Exposure Science Division of the Environmental and Occupational Health Sciences Institute (EOHSI). EOHSI is a joint institute of the UMDNJ-Robert Wood Johnson Medical School and Rutgers University. He works to "bridge" science, education and policy in a multidisciplinary fashion to reduce and/or prevent environmental exposures and health effects. At UMDNJ School of Public Health, he is an Assistant Professor and Director of the NJ Safe Schools Program (<http://www.njsafeschools.org>), which includes injury surveillance, science-to-policy, communications, and many types of training for teachers and administrative professionals in secondary education (public and private) concerning safety and health. He is also the co-Director of the Center for School and Community-Based Research and Education at UMDNJ.

**Mindy Sherwood** is a former journalist turned marketing communications specialist. Prior to joining the Career and Technical Education Partnership at Raritan Valley Community College in the role of Communications and Outreach Specialist, she was a Media Relations specialist at Oxford Communications (Lambertville) and Corporate Communications Manager at RMJM, formerly Hillier Architecture (New York City). She also held positions as editor in chief of the Princeton Business Journal and associate producer at New Jersey Network Public Television. She holds a master's degree in writing from Johns Hopkins University and a bachelor's degree in English from William Smith College.

**Ira Stern** works in the Corporation for Re-Employment and Safety Training (CREST) Department of the International Association of Machinists and Aerospace Workers (IAMAW). He administers the union's NJ Youth Transition to Work (YTTW) program. Working together with District 15 of the Machinists, Ira has coordinated the outreach and education to non-traditional and at risk high school students on the career opportunities in the auto and diesel technician's field through apprenticeships. Over the last nine years, he facilitated the placement of dozens of young people, and many are successful automobile and diesel technicians. Ira attended the Cornell School of Industrial and Labor Relations, and later attended graduate school at Rutgers University while working at the Ford Assembly Plant in Edison NJ.

## ABOUT THE PRESENTERS

**Julie Stratton** teaches Environmental Literacy at Cape May County Technical High School. She will co-teach for the new green building program and work with teachers to develop lessons incorporating Geospatial Information Systems (GIS) technology, environmental concepts and other technology subjects in interdisciplinary projects and lessons. She also teaches Oceanography and Web Design through Virtual High School. She is an adjunct faculty for Atlantic Cape Community College and Cumberland County College. She also is a staff developer for the Cape May County Educational Training Center. Julie has an A.S. in Science, B.S. in Geosciences, B.A. in Education, and M.S. in Geosciences with environmental concentration.



**Margo Venable** is responsible for oversight and administration of the CTE Partnership Grant Program in the Human Services career cluster at Camden County College. She is an adjunct faculty member in the area of Business, an administrator, a labor consultant, and a national speaker with over 25 years of experience at Camden County College in the area of student services and student development. Margo has worked as a Director of Upward Bound, a Director of Student Life and Activities, a Director of College and High School Partnership Programs, and is the Assistant Dean of the Division of School and Community Academic Programs. She received an M.B.A. from the University of Phoenix and a B.S. in Personnel Management and Labor Relations from Rowan University.

**Kathy Wilhelmy** has been a teacher at Mercer County Vocational Technical School for nine years. She has been involved with Project Lead the Way (PLTW) for four years. Kathy has an M.S. in Education and a B.S. in Biology. She is a Master Teacher of the PLTW course: Principles of Biomedical Science.

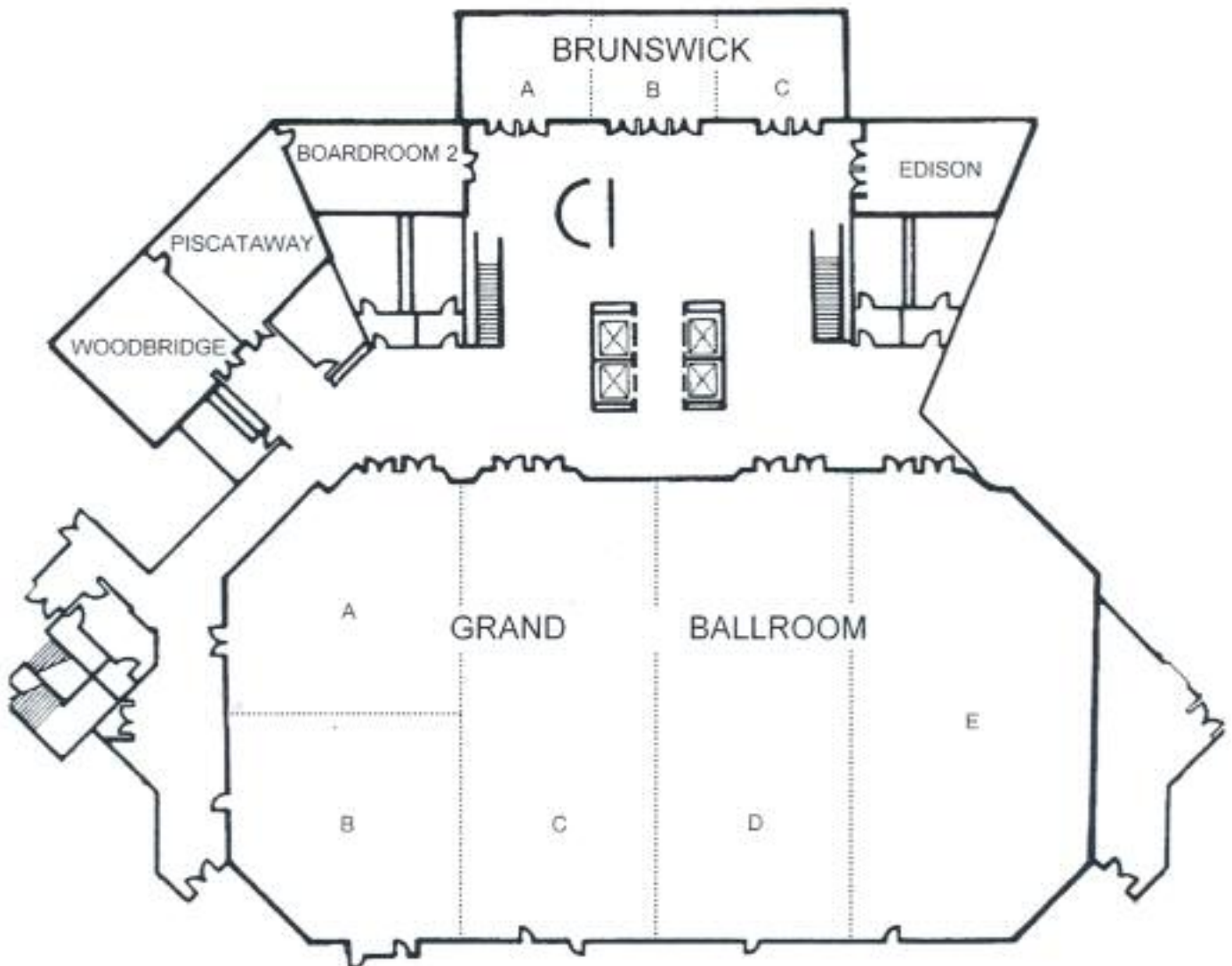


**Darlene Yoseloff** is the director of the Office of School Relations at Middlesex County College. School Relations is the College's link to the public, charter, private, and parochial schools for teachers, counselors, administrators, students and parents in grades K-12. Darlene is responsible for the coordination of grant funded programs such as the Mid-Jersey Meadowlands Math/Science Partnership and the CTEP: Marketing program that includes the DECA student organization. The Office sponsors programming for students that include the NJ Science Olympiad, the summer Gateway program for students who are academically gifted and the High School Scholars program that encourages students to take college-level courses while they are in high school. School Relations also administers the New Pathways to Teaching in NJ, an alternate route to teaching. Mrs. Yoseloff is a graduate of Hunter College of the City University of New York.



## Ballroom Level

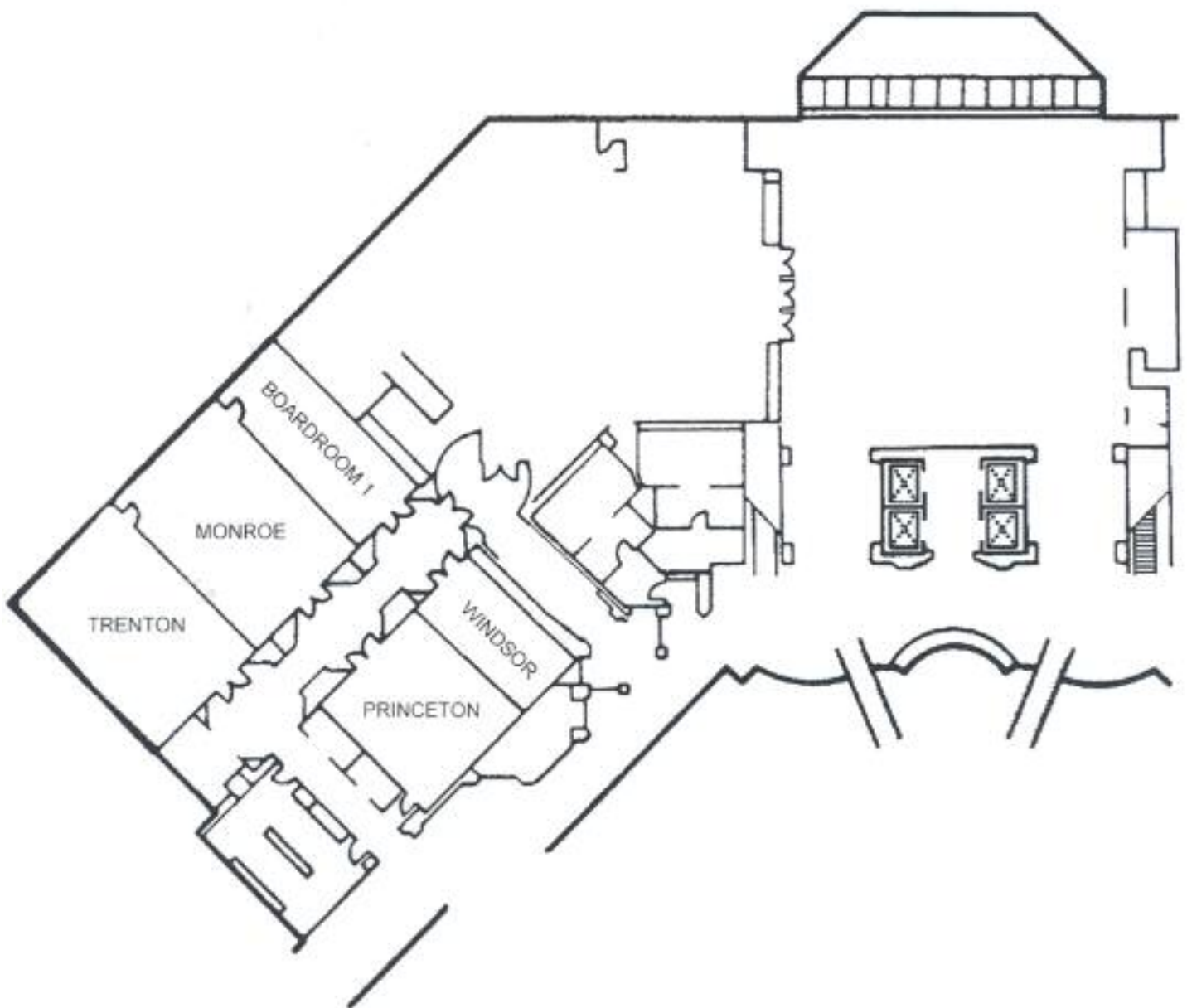
### HILTON EAST BRUNSWICK & TOWERS - "B" LEVEL





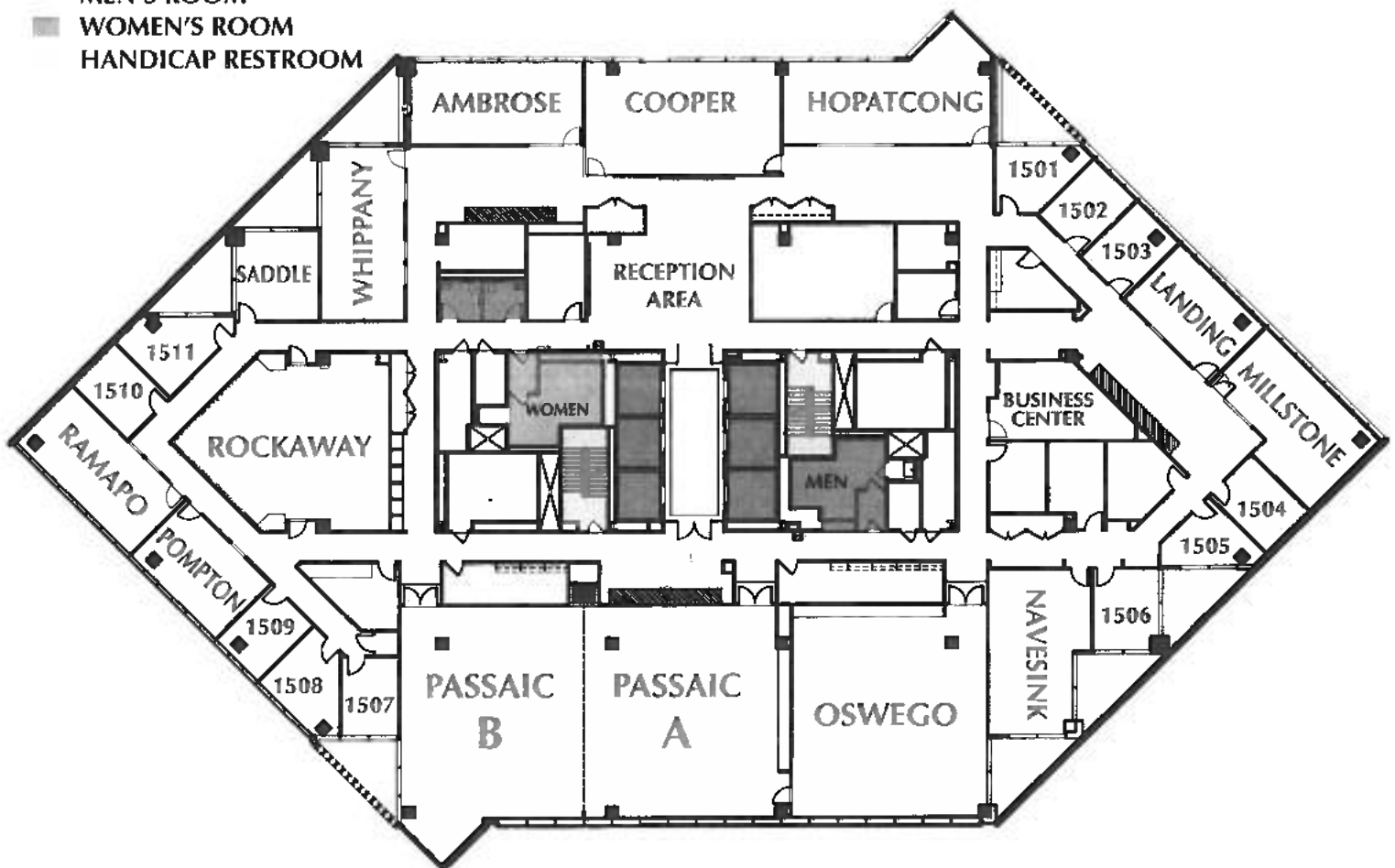
## Concourse Level

### HILTON EAST BRUNSWICK & TOWERS - "C" LEVEL



## Executive Meeting Center Tower One - 15th Floor

- ELEVATORS
- STAIR
- MEN'S ROOM
- WOMEN'S ROOM
- HANDICAP RESTROOM



*The CTE brand logo, brand positioning theme and  
brand extensions are the property of NASDCTEc.  
[www.careertech.org](http://www.careertech.org)*