

# **New Hampshire Rigorous Program of Study Model**

CPPOS  
Career Pathway Plans of Study

Kim Runion

# CPPOS

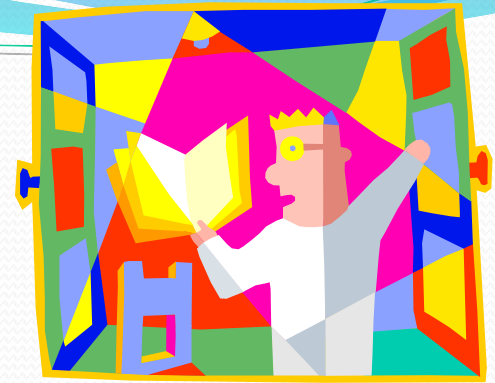
The what, who, how and why of  
creating and implementing a  
Rigorous Career Plan of Study.

# Why?

- Students Benefits
  - Exposure to career opportunities
  - Seamless Transition from high school to college
  - Save time and money

# What?

- Relationships
- Rigorous Career Pathway Plan of Study
- Dual Enrollment & Articulated Credit Options



# Who?

- High School Teacher
- High School Guidance Counselor
- College Educator

# How?

- Build Teams
- Develop an Academic Plan
- Investigate Dual Enrollment Opportunities

**NH High Schools** ➡ **Community College System of NH** ➡ **Four-Year Colleges & Universities**

# Want a Copy of the Manual? Go to:

<http://education.nh.gov/career/career/rpos.htm>

Questions?

Contact:

Kim Runion

[krunion@ed.state.nh.us](mailto:krunion@ed.state.nh.us)

(603)271-3805

Kathleen Totten

[erpartnership@ccsnh.edu](mailto:erpartnership@ccsnh.edu)

(603)433-1964

Mary Laturneau

(603)437-3510

[NHMfgIT@gmail.com](mailto:NHMfgIT@gmail.com)