

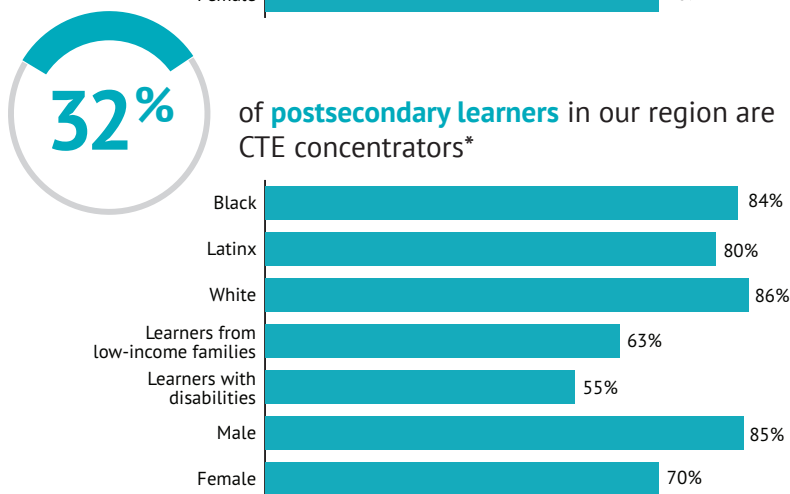
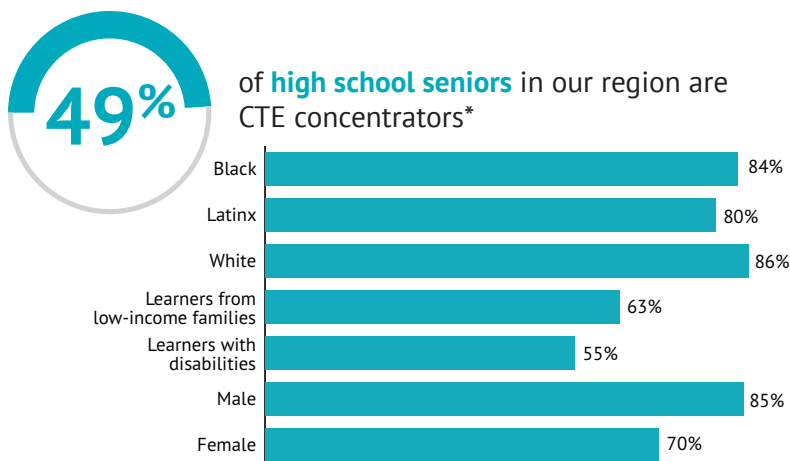
# CTE Works for Business

Preparing the  
Workforce You Need

Northern Region  
WEST DAKOTA

Career Technical Education (CTE) provides businesses a pipeline of skilled workers to fill job openings. CTE combines academic learning with real-world, practical skills through hands-on training, mentoring, internships, apprenticeships and more with local employers.

## Many learners in our region participate in CTE.




\*Secondary CTE concentrators have completed at least two courses in a single CTE program. Postsecondary concentrators have completed at least 12 credits in a CTE program or completed a program that encompasses fewer than 12 credits.


All data are from the 2018–19 school year unless otherwise noted.

## CTE helps learners explore careers and gain real-world experience.

 **700+** CTE programs are offered in 16 Career Clusters® across the state

 **26%** of graduating secondary CTE concentrators were members of a Career Technical Student Organization participating in extracurricular activities related to their CTE program and learning leadership skills

 **51%** of **graduating secondary CTE concentrators** **AND** **49%** of **graduating postsecondary CTE concentrators** participated in work-based learning including job shadowing, internships, apprenticeships and workplace readiness activities

 **146** employers participated in work-based learning statewide

See [website.org](https://www.cte.org) for more details about available CTE programs, work-based learning and Career Technical Student Organizations.

CTE also helps learners get an early start on careers.



**1,515** credentials of value

were earned by secondary CTE learners in 2017-18  
demonstrating their job readiness

CTE learners go on to succeed.



**78%** of **secondary CTE concentrators** enrolled in  
postsecondary education, were employed or enlisted  
in the military after high school graduation



**82%** of **postsecondary CTE learners** were employed,  
in advanced training or in the military within  
6 months of graduation/program completion

add photo here

add photo here

add photo here

Employers in our region can support CTE by participating in work-based learning,  
serving on CTE advisory boards, and more.

Find out how you can get involved in CTE at [website.org](http://website.org).

“I wasn’t very interested in high school, and no one in my family had ever gone to college. But then I saw a video about the Health Sciences CTE program and students practicing getting trapped people out of a damaged building. I saw how what I would learn could help people in the real world. Now I am studying to be a nurse.”

—JOSE RAMOS

“For five years, we have provided internships for CTE students. The students are interested, engaged and helpful. We learn a lot from each other. We have hired several of them after they completed their program because we knew they had the skills and knowledge we needed and were ready to hit the ground running.”

—LOCAL EMPLOYER