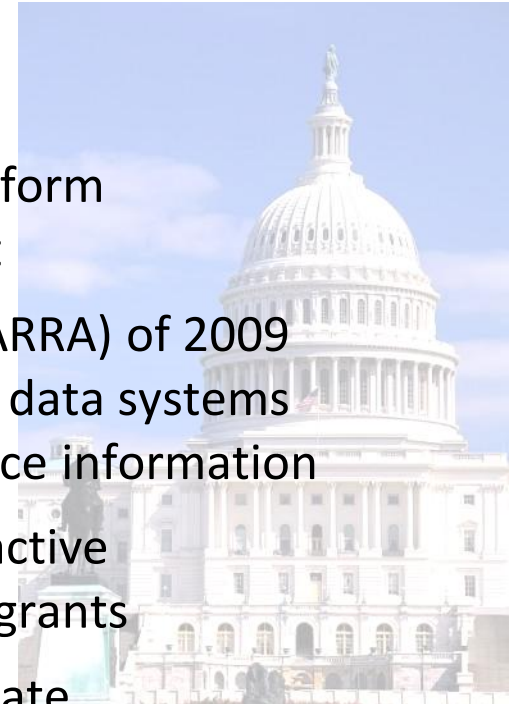




S t a t e w i d e
L o n g i t u d i n a l
D a t a S y s t e m s
G r a n t P r o g r a m

Legislative Background

- Authorized in 2002 by the Education Sciences Reform Act and the Educational Technical Assistance Act
- The American Recovery and Reinvestment Act (ARRA) of 2009 provided \$250 million in SLDS funding to expand data systems to include postsecondary education and workforce information
- The grants are cooperative agreements – more active federal government involvement than in typical grants
- 3 to 5 year awards of \$1.5 to \$19.7 million per State
- Administered by the Institute of Education Sciences (IES) of the U.S. Department of Education



Goals of the Program

Enable grantees to design, develop, and implement SLDSs to *efficiently and accurately manage, analyze, disaggregate, report, and use individual student data.*

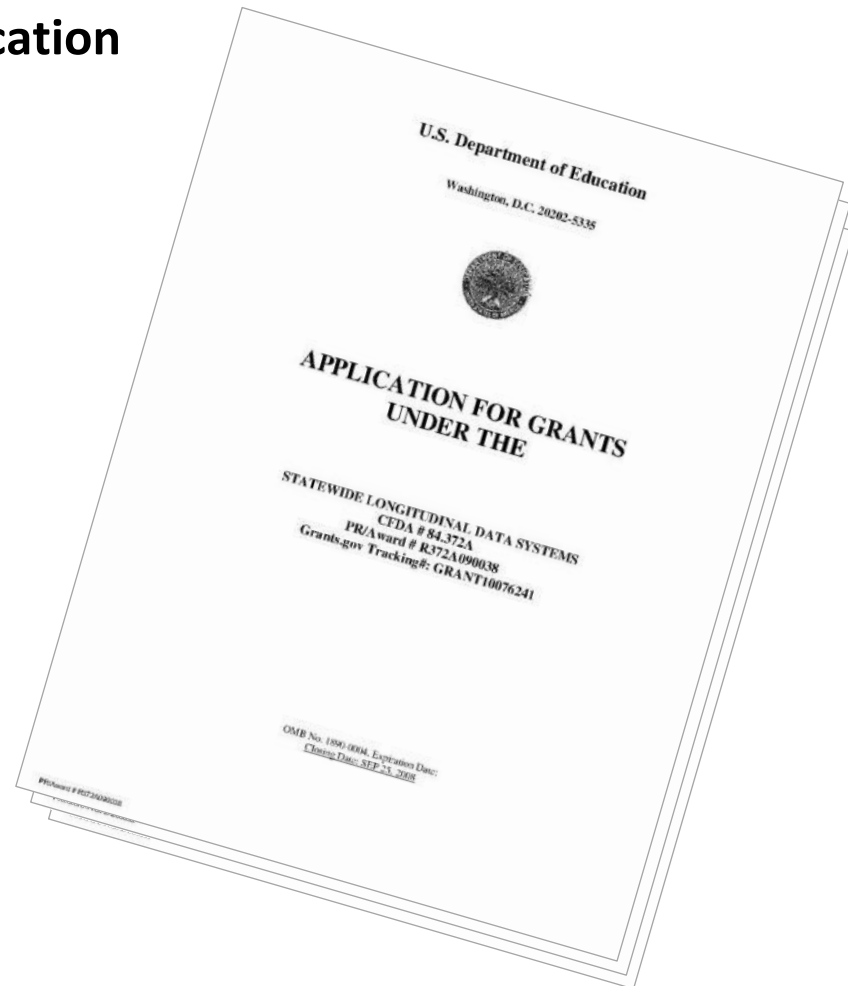
The long term goals of this program are to:

- 1) identify successful instructional programs and facilitate use of research to **improve instruction**
- 2) determine whether **graduates have knowledge and skills** to succeed in postsecondary education and the workforce
- 3) **simplify the processes** used by state education agencies to make educational data transparent through local, state, and federal reporting
- 4) support **informed decisionmaking** at all levels of the education system
- 5) permit the generation and use of **accurate and timely** data

Eligible Applicants

Eligible applicants include the **state education agencies** of:

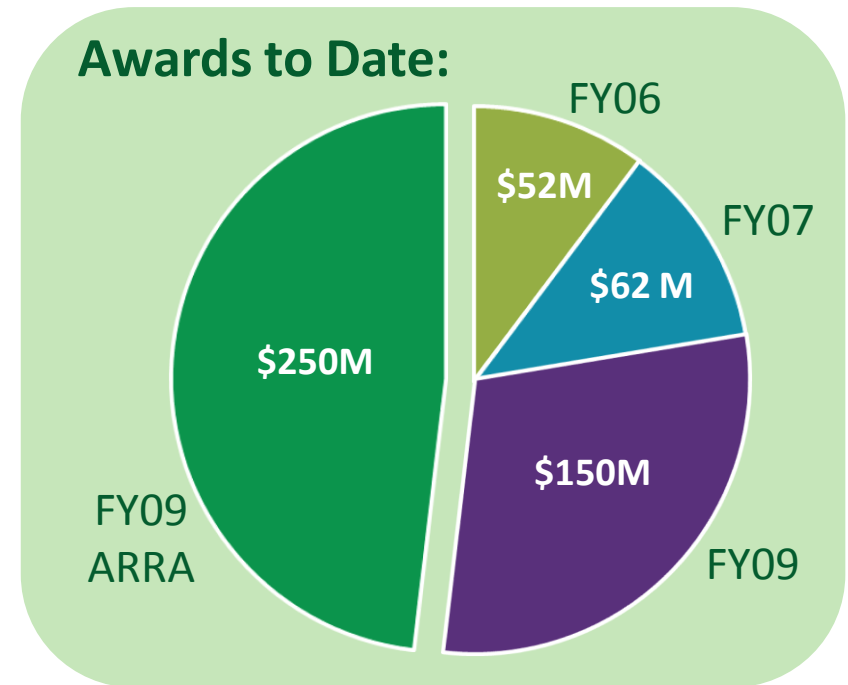
- 50 States
- District of Columbia
- Commonwealth of Puerto Rico
- United States Virgin Islands
- American Samoa
- Guam
- Commonwealth of the Northern Mariana Islands



Grant Awards Status

To date, 41 states and the District of Columbia have been awarded SLDS grants totaling \$515M:

- **FY06:** November 2005 – 14 grantees awarded over \$52M
- **FY07:** June 2007 – 13 grantees awarded over \$62M
- **FY09:** April 2009 – 27 grantees awarded over \$150M
- **FY09 ARRA:** May 2010 – Fourth competition announced under the American Recovery and Reinvestment Act (ARRA) awarded \$250M to 20 states



Program Evolution

FY06, FY07

FY09

FY09 ARRA

K12



K12 + ONE
of following:

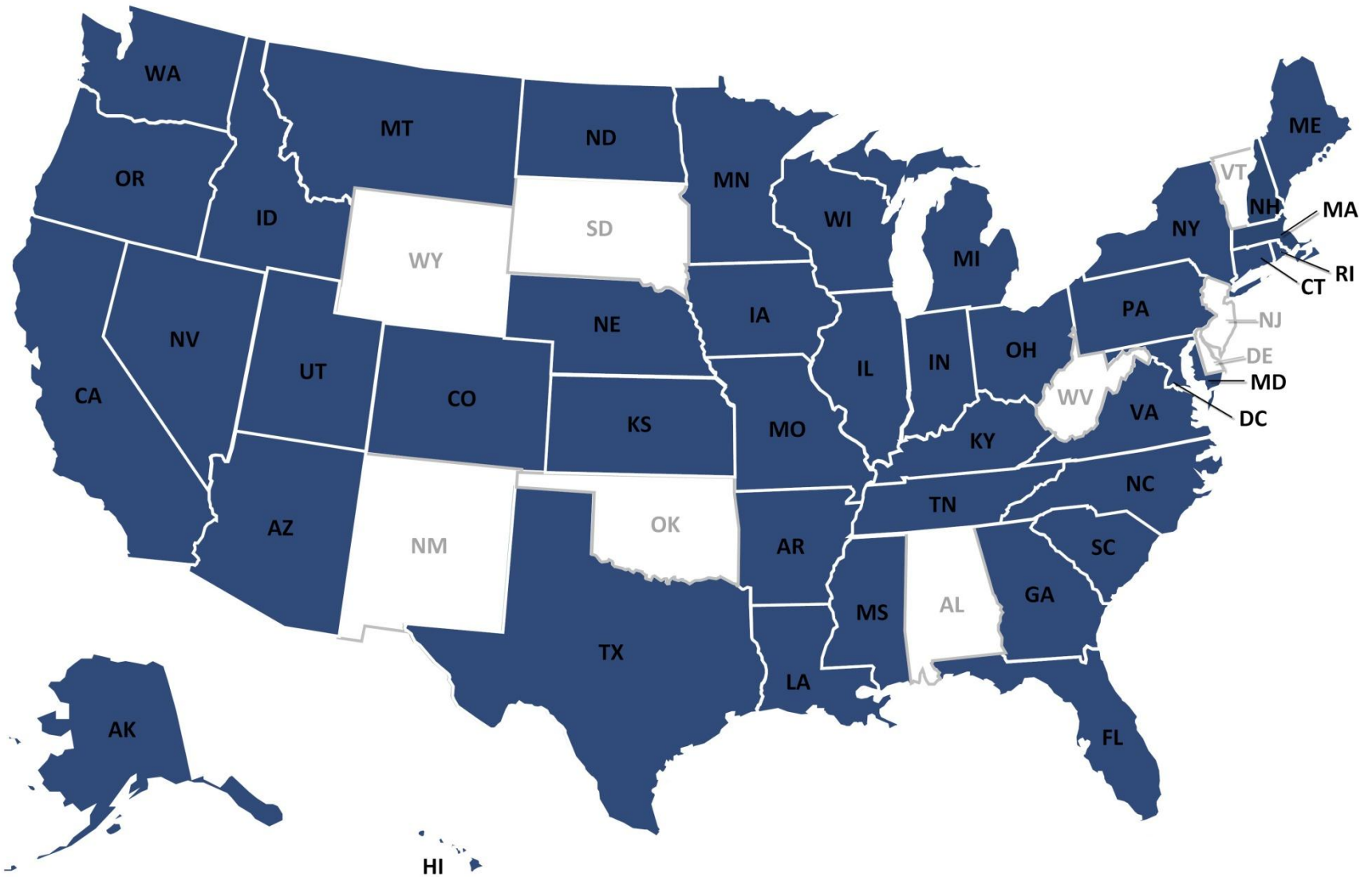
PreK, Postsecondary,
Workforce, OR
student-teacher link



K12 + ALL
of following:

PreK, Postsecondary,
Workforce, AND
student-teacher link

Grantee States

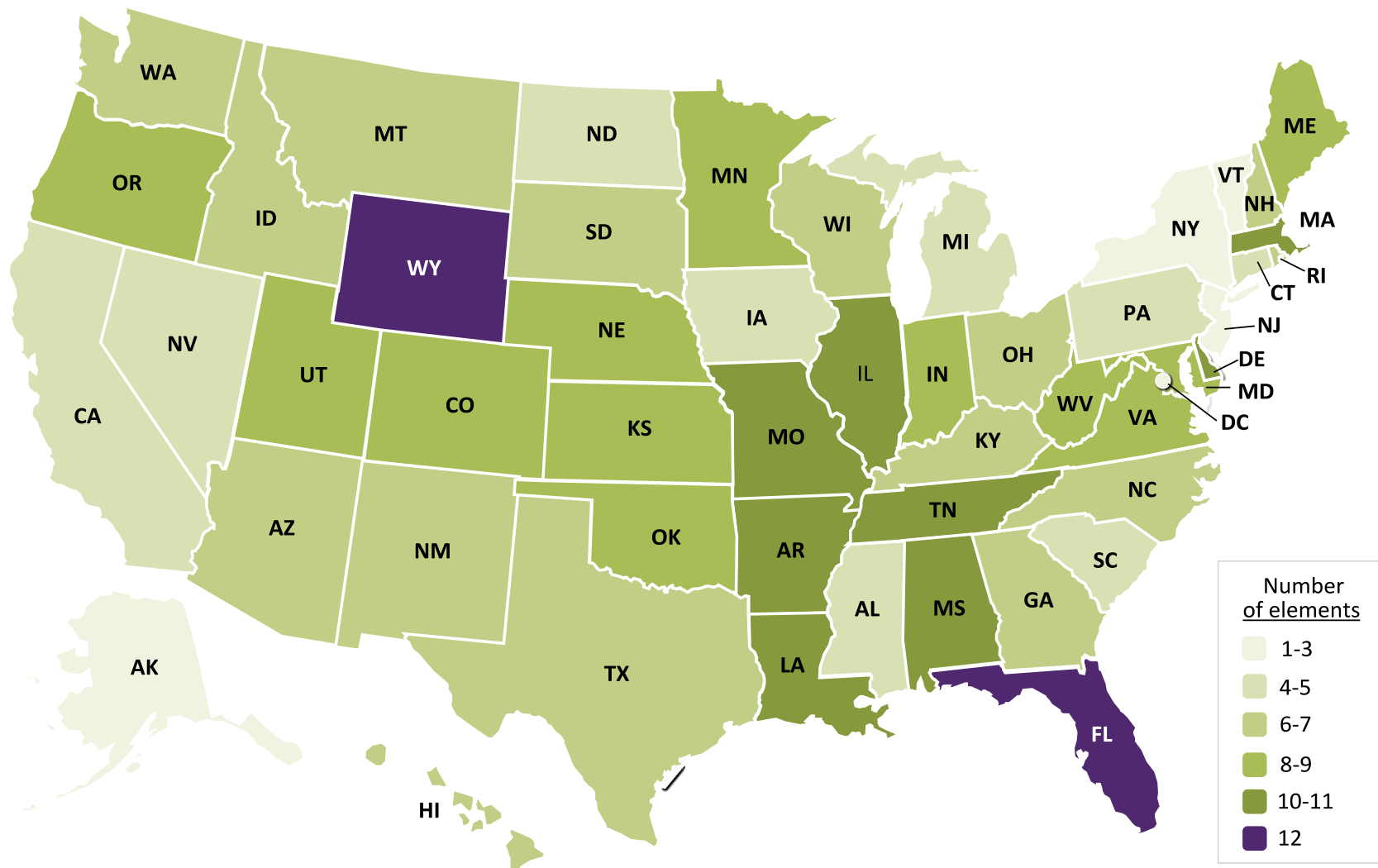


Grantee States

2006	2007	2009	2009 ARRA
<ul style="list-style-type: none"> • Alaska • Arkansas • California • Connecticut • Florida • Kentucky • Maryland • Michigan • Minnesota • Pennsylvania • Ohio • South Carolina • Tennessee • Wisconsin 	<ul style="list-style-type: none"> • Arizona • Colorado • District of Columbia • Indiana • Kansas • Maine • Nebraska • Nevada • New Hampshire • North Carolina • Oregon • Utah • Virginia 	<ul style="list-style-type: none"> • Arkansas • California • Connecticut • Florida • Georgia • Hawaii • Idaho • Illinois • Iowa • Kansas • Kentucky • Louisiana • Maryland • Massachusetts • Michigan • Mississippi • Missouri • Montana • New York • North Dakota • Ohio • Oregon • Pennsylvania • Rhode Island • Texas • Washington • Wisconsin 	<ul style="list-style-type: none"> • Arkansas • Colorado • Florida • Illinois • Kansas • Maine • Massachusetts • Michigan • Minnesota • Mississippi • New York • Ohio • Oregon • Pennsylvania • South Carolina • Texas • Utah • Virginia • Washington • Wisconsin

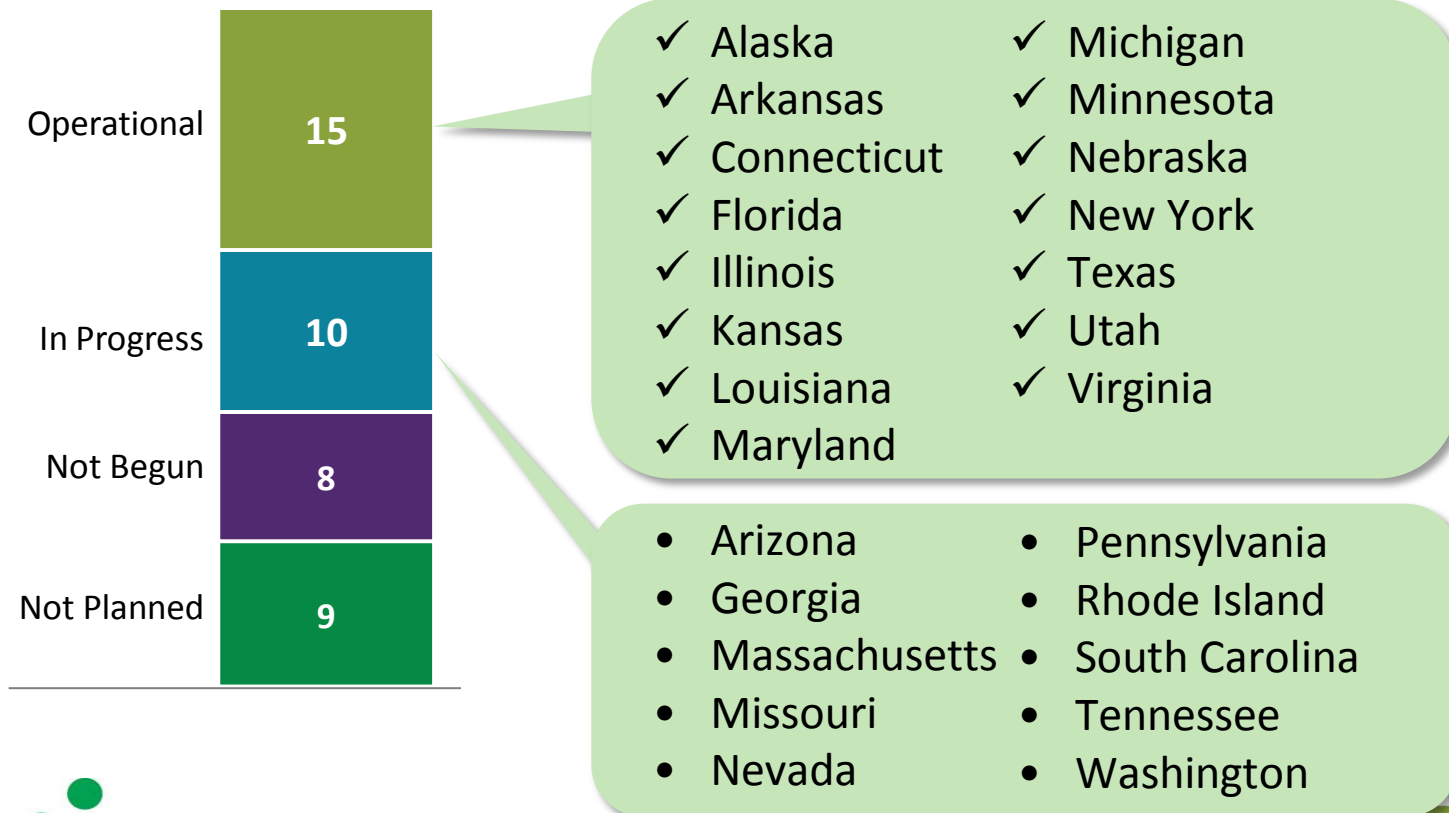
State Progress:

America COMPETES Act Elements



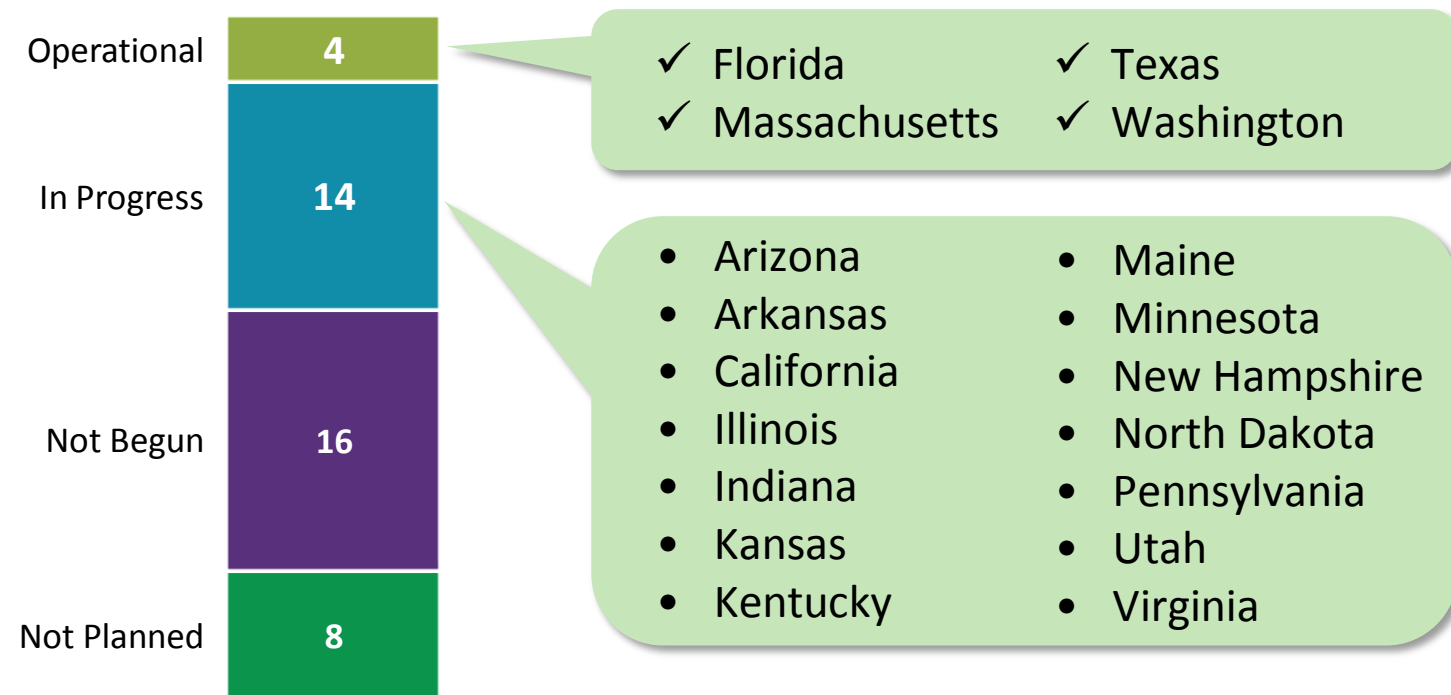
Grantee Progress:

PreK/Early Childhood Education Data Integration



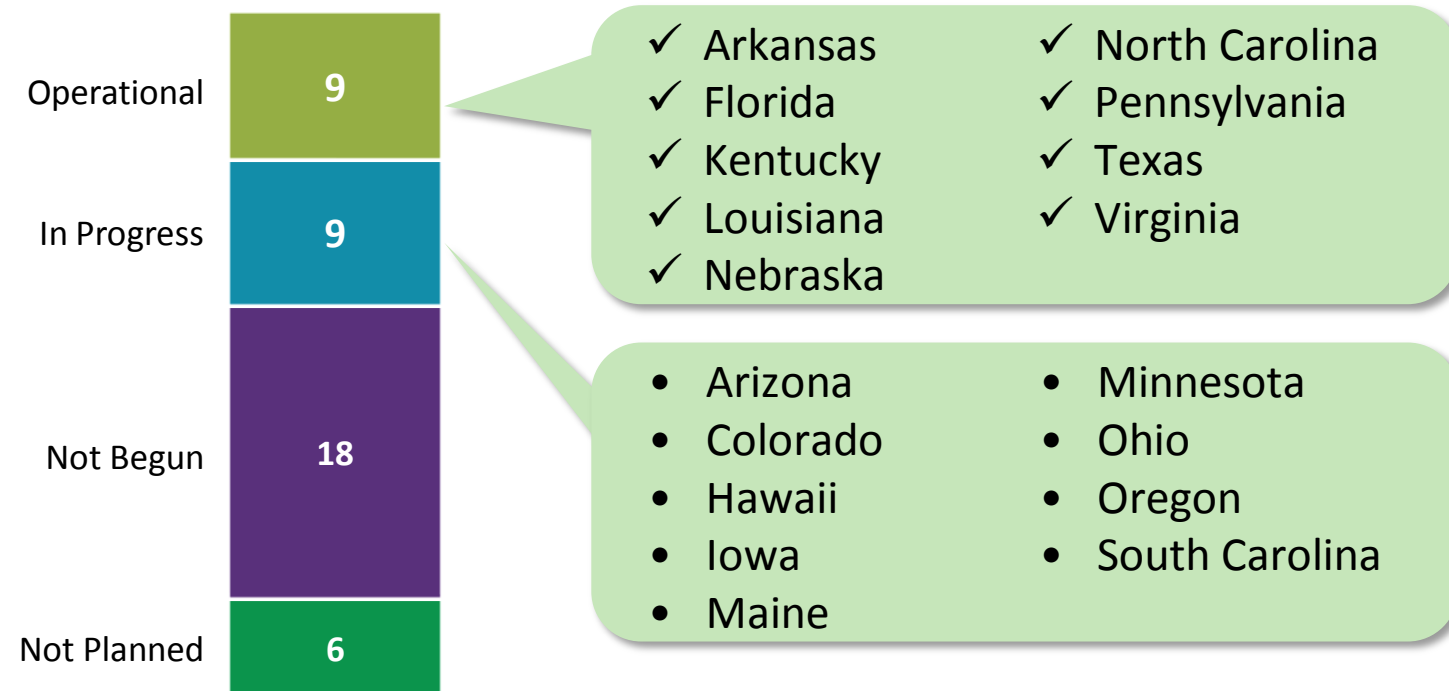
Grantee Progress:

Postsecondary Data Integration

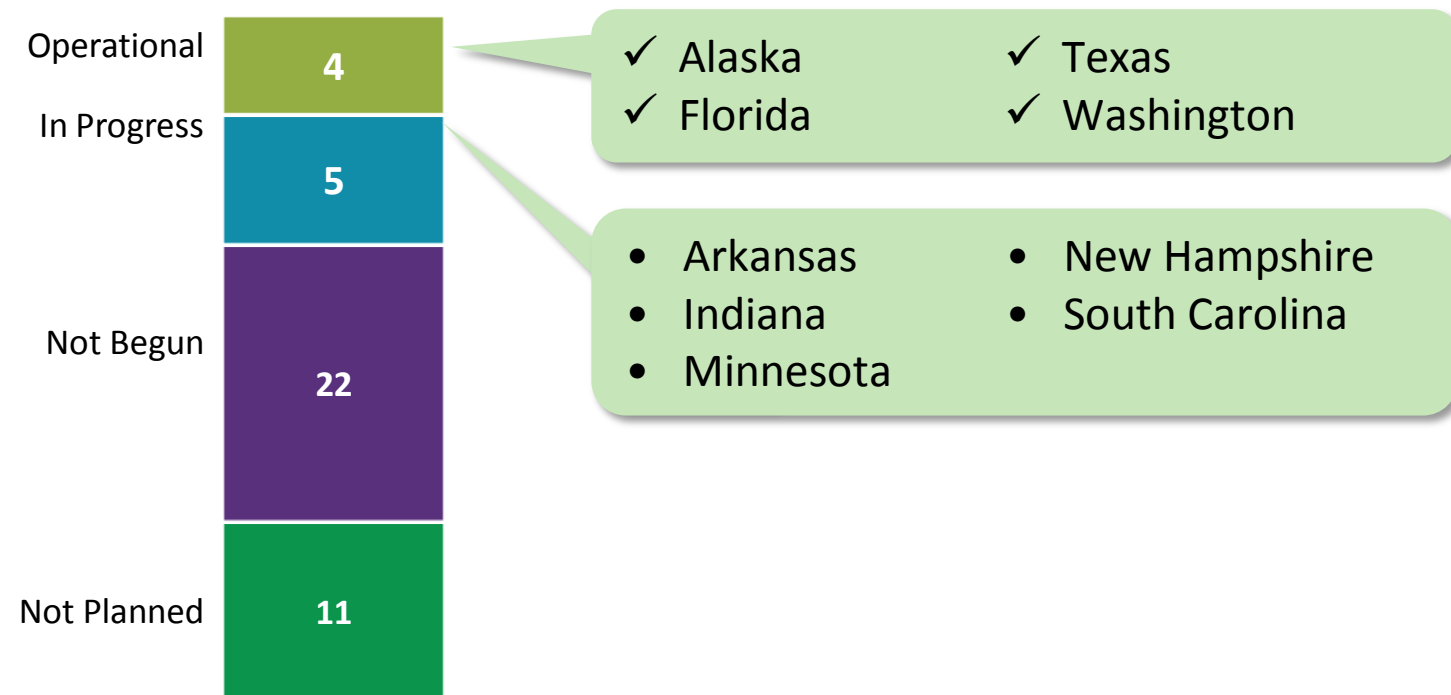


Grantee Progress:

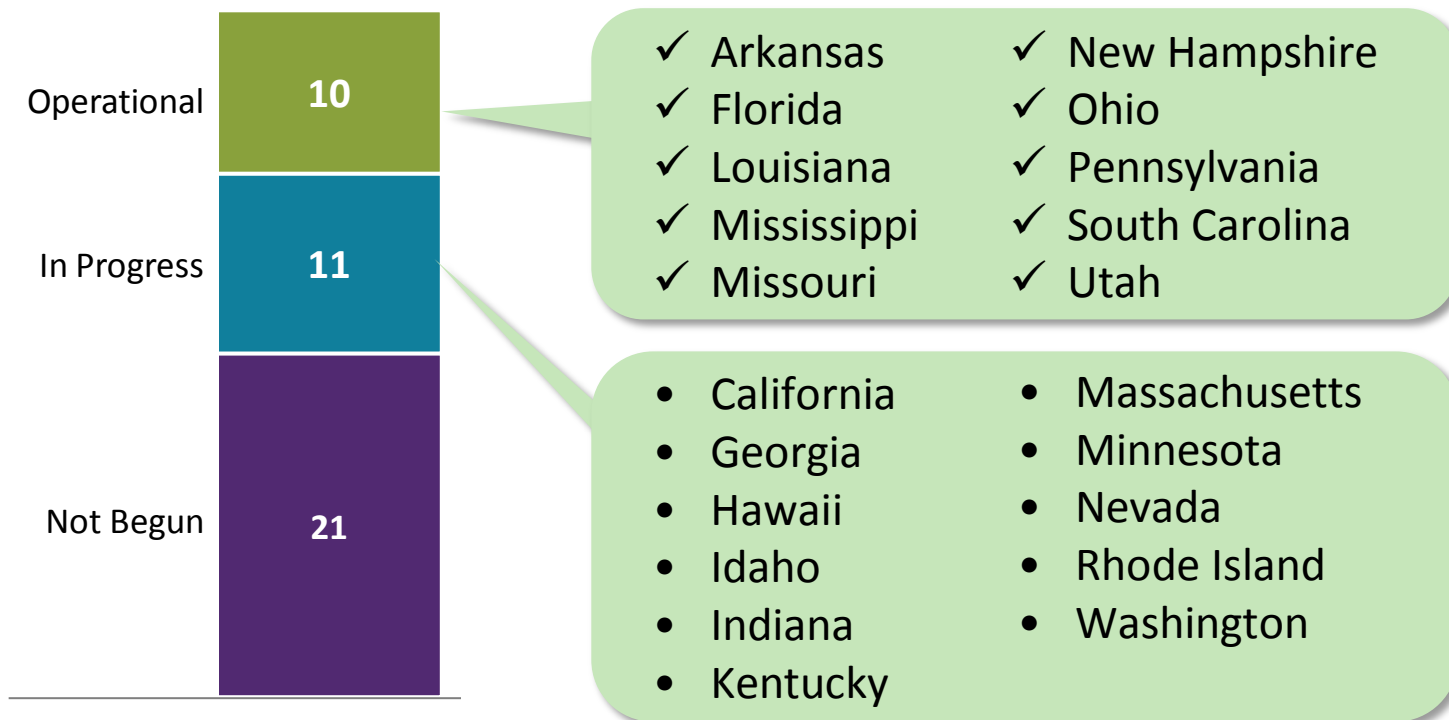
E-Transcripts to Postsecondary - Data Transfer



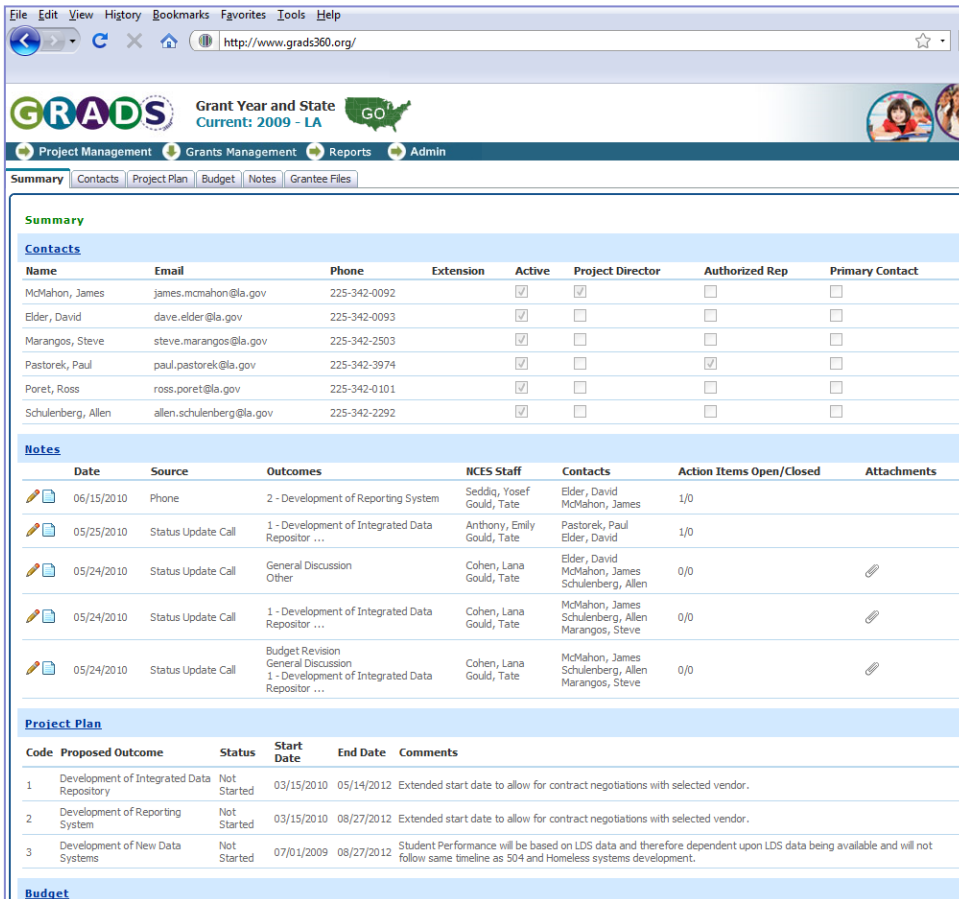
Grantee Progress: Labor/Workforce Data Integration



Grantee Progress: Teacher-Student Link



Grants Management and Monitoring



The screenshot shows the GRADS 360 web application interface. The top navigation bar includes links for Project Management, Grants Management, Reports, and Admin. The main content area is divided into several sections:

- Summary:** A table listing contacts with columns for Name, Email, Phone, Extension, Active, Project Director, Authorized Rep, and Primary Contact.
- Notes:** A table listing notes with columns for Date, Source, Outcomes, NCES Staff, Contacts, Action Items Open/Closed, and Attachments.
- Project Plan:** A table listing project outcomes with columns for Code, Proposed Outcome, Status, Start Date, End Date, and Comments.
- Budget:** A section for budget management.

Summary Table:

Name	Email	Phone	Extension	Active	Project Director	Authorized Rep	Primary Contact
McMahon, James	james.mcmahon@la.gov	225-342-0092		<input checked="" type="checkbox"/>	<input checked="" type="checkbox"/>	<input type="checkbox"/>	<input type="checkbox"/>
Elder, David	dave.elder@la.gov	225-342-0093		<input checked="" type="checkbox"/>	<input type="checkbox"/>	<input type="checkbox"/>	<input type="checkbox"/>
Marangos, Steve	steve.marangos@la.gov	225-342-2503		<input checked="" type="checkbox"/>	<input type="checkbox"/>	<input type="checkbox"/>	<input type="checkbox"/>
Pastorek, Paul	paul.pastorek@la.gov	225-342-3974		<input checked="" type="checkbox"/>	<input type="checkbox"/>	<input checked="" type="checkbox"/>	<input type="checkbox"/>
Poret, Ross	ross.poret@la.gov	225-342-0101		<input checked="" type="checkbox"/>	<input type="checkbox"/>	<input type="checkbox"/>	<input type="checkbox"/>
Schulenberg, Allen	allen.schulenberg@la.gov	225-342-2292		<input checked="" type="checkbox"/>	<input type="checkbox"/>	<input type="checkbox"/>	<input type="checkbox"/>

Notes Table:

Date	Source	Outcomes	NCES Staff	Contacts	Action Items Open/Closed	Attachments
06/15/2010	Phone	2 - Development of Reporting System	Seddiq, Yusef Gould, Tate	Elder, David McMahon, James	1/0	
05/25/2010	Status Update Call	1 - Development of Integrated Data Repository ...	Anthony, Emily Gould, Tate	Pastorek, Paul Elder, David	1/0	
05/24/2010	Status Update Call	General Discussion Other	Cohen, Lana Gould, Tate	Elder, David McMahon, James Schulenberg, Allen Marangos, Steve	0/0	
05/24/2010	Status Update Call	1 - Development of Integrated Data Repository ...	Cohen, Lana Gould, Tate	McMahon, James Schulenberg, Allen Marangos, Steve	0/0	
05/24/2010	Status Update Call	Budget Revision General Discussion 1 - Development of Integrated Data Repository ...	Cohen, Lana Gould, Tate	McMahon, James Schulenberg, Allen Marangos, Steve	0/0	

Project Plan Table:

Code	Proposed Outcome	Status	Start Date	End Date	Comments
1	Development of Integrated Data Repository	Not Started	03/15/2010	05/14/2012	Extended start date to allow for contract negotiations with selected vendor.
2	Development of Reporting System	Not Started	03/15/2010	08/27/2012	Extended start date to allow for contract negotiations with selected vendor.
3	Development of New Data Systems	Not Started	07/01/2009	08/27/2012	Student Performance will be based on LDS data and therefore dependent upon LDS data being available and will not follow same timeline as S04 and Homeless systems development.

Budget Table:

Code	Proposed Outcome	Status	Start Date	End Date	Comments
------	------------------	--------	------------	----------	----------



"GRADS 360":

Database organizes and provides easy access to grants information (e.g., project plans, budgets, contact information, etc.)

Grantee Activities & Resources



Conference Calls: Regular call updates are held between grantee Project Directors and SLDS Program Officers

ies NATIONAL CENTER FOR EDUCATION STATISTICS U.S. Department of Education Institute of Education Sciences

NewsFlash Staff Contact Site Index Help **KIDS.gov** NCES GO

Publications & Products Surveys & Programs Data Tools Tables & Figures Fast Facts School, College, & Library Search Annual Reports What's New About Us

Statewide Longitudinal Data Systems Grant Program

Designing, Developing, Implementing, & Using Longitudinal Data Systems to Improve Student Learning

SLDS

Program Overview

Standards and Guidelines

Events

Resources

LDS Share

Grantees

Features Matrix

Grant Information

Join NewsFlash

Contact

Program Overview

The Statewide Longitudinal Data Systems (SLDS) Grant Program, as authorized by the Educational Assistance Act of 2002, Title II of the statute that created the Institute of Education Sciences (IES), is designed to aid state education agencies in developing and implementing longitudinal data systems. These systems are intended to enhance the ability of States to efficiently and accurately manage, analyze, and use education data, including individual student records. The data systems developed with funds from these grants should help States, districts, schools, and teachers make data-driven decisions to improve student learning, as well as facilitate research to increase student achievement and close achievement gaps.

These competitive, cooperative agreement grants extend for three to five years for up to nine million dollars per grantee. Grantees are obligated to submit annual reports and a final report on the development and implementation of their systems. All 50 States, five territories, and the District of Columbia are eligible to apply. In November of 2006, the first year of the grant program, IES awarded grants to 14 States. In June of 2007, IES awarded grants to an additional 12 States and the District of Columbia. In March of 2009, IES awarded grants to 27 States.

Lessons learned and non-proprietary products/solutions developed by recipients of these grants will be disseminated to aid other State and local education agencies in the design, development, implementation, and use of longitudinal data systems.

For more information on the Statewide Longitudinal Data Systems Grant Program, contact [Tate Gould](#) or [Emily Anthony](#) at the National Center for Education Statistics.

HIGHLIGHTS

NEW! FAQ on FY09 ARRA RFA
Frequently asked questions regarding the FY09 ARRA RFA.

Revised Deadline for the FY09 ARRA RFA
The submission deadline for the fourth round of Statewide Longitudinal Data Systems Grants has been extended to December 4, 2009.

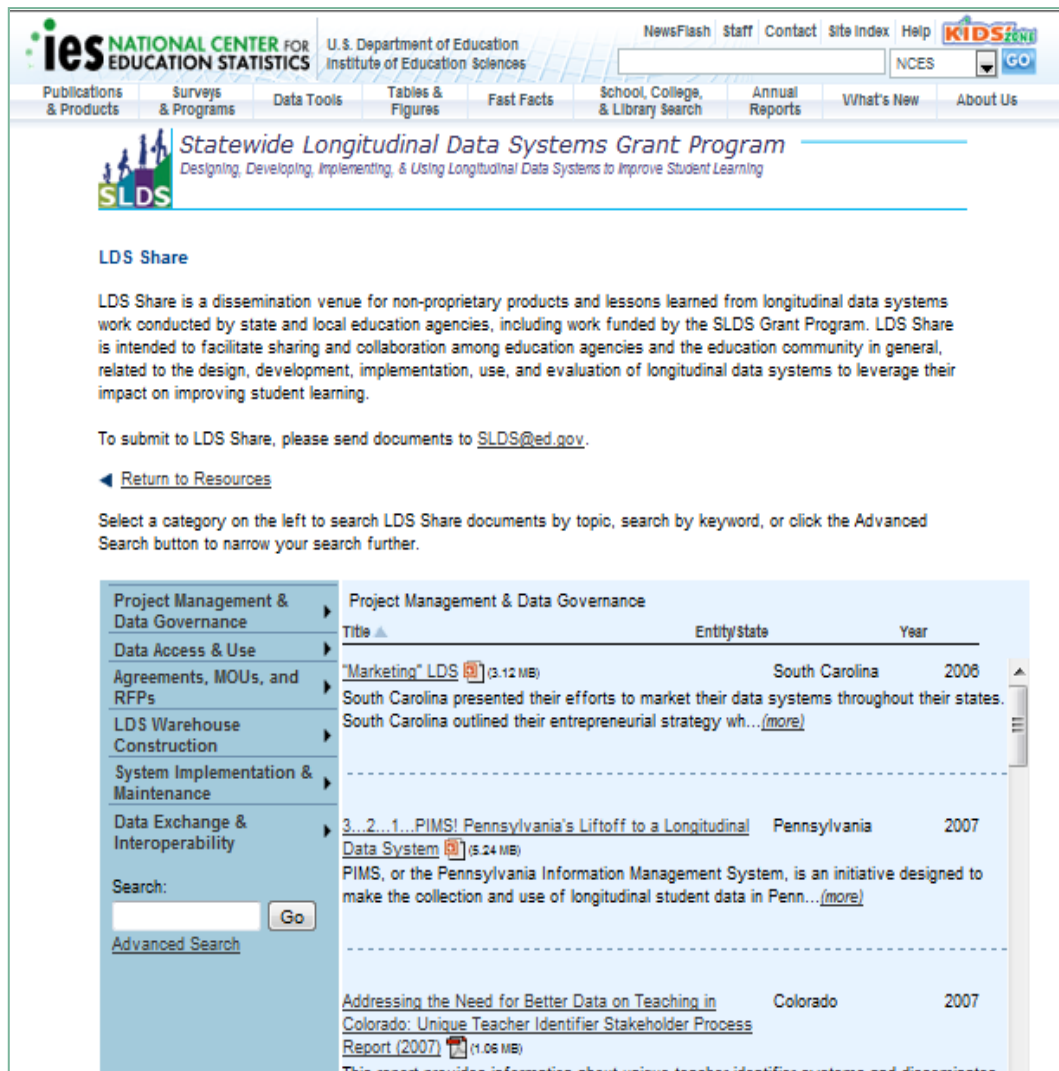
FY09 ARRA RFA WebEx
NCES informational WebEx for FY09 ARRA RFA ([Presentation Now Available](#))

LDS Share
NCES developed a searchable database of documents on creating statewide longitudinal data systems (SLDS) for states.

- **SLDS program website:** Includes links to presentations from conferences, state web pages, and other related resources



Grantee Activities & Resources *(continued)*



ies NATIONAL CENTER FOR EDUCATION STATISTICS U. S. Department of Education
Institute of Education Sciences

NewsFlash | Staff | Contact | Site Index | Help | **KIDS ZONE**

Publications & Products | Surveys & Programs | Data Tools | Tables & Figures | Fast Facts | School, College, & Library Search | Annual Reports | What's New | About Us

SLDS *Statewide Longitudinal Data Systems Grant Program*
Designing, Developing, Implementing, & Using Longitudinal Data Systems to Improve Student Learning

LDS Share

LDS Share is a dissemination venue for non-proprietary products and lessons learned from longitudinal data systems work conducted by state and local education agencies, including work funded by the SLDS Grant Program. LDS Share is intended to facilitate sharing and collaboration among education agencies and the education community in general, related to the design, development, implementation, use, and evaluation of longitudinal data systems to leverage their impact on improving student learning.

To submit to LDS Share, please send documents to SLDS@ed.gov.

[Return to Resources](#)

Select a category on the left to search LDS Share documents by topic, search by keyword, or click the Advanced Search button to narrow your search further.

Category	Title	Entity/State	Year
Project Management & Data Governance	"Marketing" LDS (3.12 MB)	South Carolina	2006
	South Carolina presented their efforts to market their data systems throughout their states. South Carolina outlined their entrepreneurial strategy wh... (more)		
Data Access & Use	3...2...1...PIMS! Pennsylvania's Liftoff to a Longitudinal Data System (5.24 MB)	Pennsylvania	2007
	PIMS, or the Pennsylvania Information Management System, is an initiative designed to make the collection and use of longitudinal student data in Penn... (more)		
Agreements, MOUs, and RFPs	Addressing the Need for Better Data on Teaching in Colorado: Unique Teacher Identifier Stakeholder Process Report (2007) (1.06 MB)	Colorado	2007
	This report provides information about unique teacher identifier systems and disseminates		

Search:

[Advanced Search](#)

“LDS Share”:

Online resource lets education agencies share helpful documents related to SLDS design, implementation and use



<http://nces.ed.gov/programs/SLDS>

Grantee Activities & Resources *(continued)*

SLDS Features: FY 2006 | FY 2007 | FY 2009
Updated May 2009

NB	P	O	-
Not Begun	Work in Progress	Operational	Not Planned

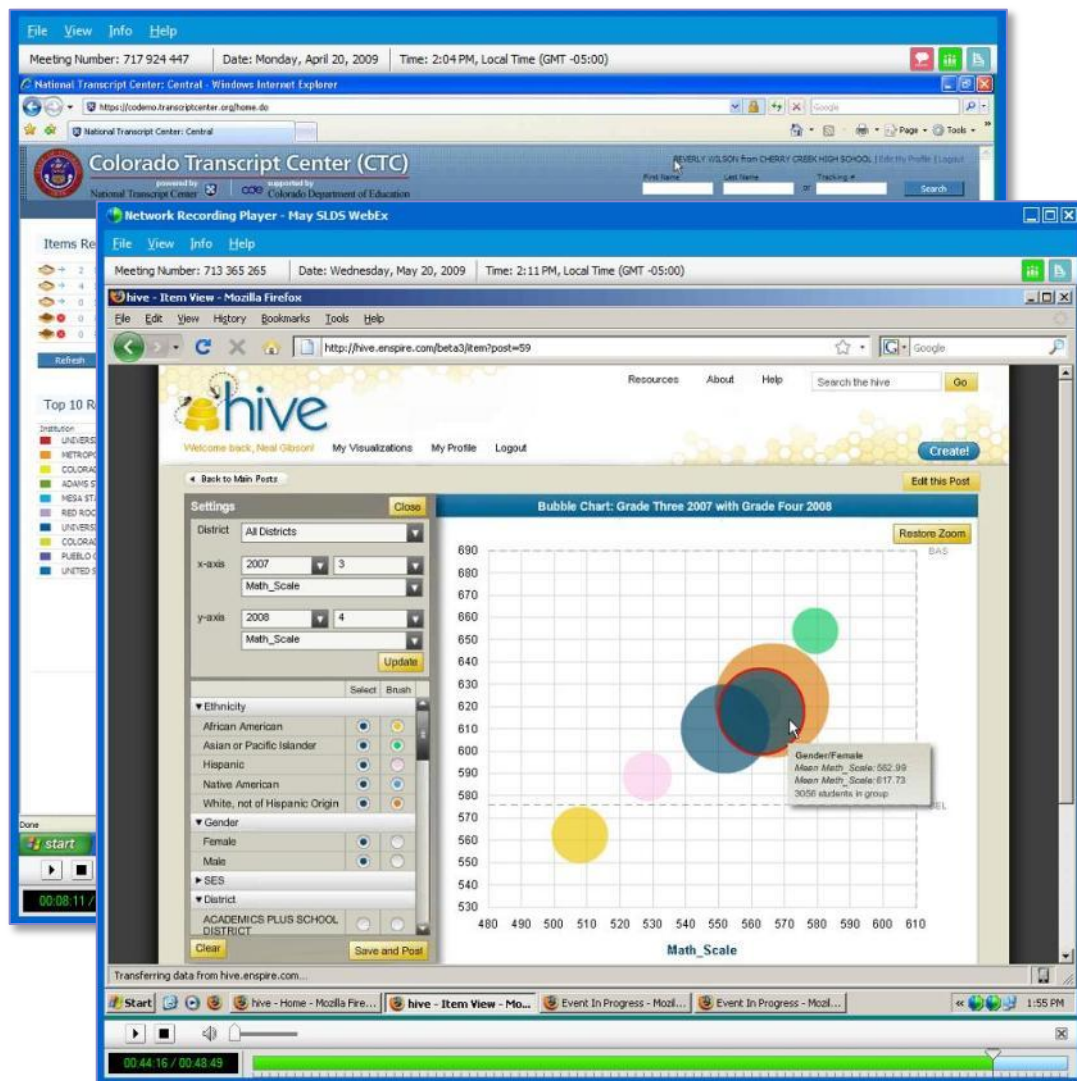
Page 1 | Page 2

Categories	AK FY06	AZ FY07	AR FY06 FY09	CA FY06 FY09	CO FY07	CT FY06 FY09	DC FY07	FL FY06 FY09	GA FY09	HI FY09	ID FY09	IL FY09	IN FY07	IA FY09	KS FY07 FY09	KY FY06 FY09	LA FY09	ME FY07	MD FY06 FY09	MA FY09	MI FY06 FY09
Data Content: Individual Student Data																					
Assessment: Local	-	NB	O	-	-	P	-	-	P	P	NB	-	P	NB	-	NB	O	-	-	O	-
Assessment: State	O	O	O	P	O	P	P	O	O	O	O	O	O	P	O	O	O	O	O	O	O
Assessment: National College Readiness (SAT, ACT, AP Scores, etc.)	-	P	O	-	O	P	NB	O	P	P	NB	O	O	P	NB	O	O	NB	NB	O	O
Classroom Grades for K-12	-	P	O	P	-	NB	NB	O	O	O	NB	NB	P	NB	NB	P	-	-	NB	NB	-
Course Enrollment and Completion	-	P	O	P	-	NB	NB	O	O	O	NB	NB	NB	P	NB	P	O	-	NB	NB	P
Attendance (Daily or Received on a Daily Basis)	O	P	O	-	-	-	P	-	P	O	NB	NB	-	NB	-	P	-	-	-	-	-
Discipline	O	P	O	P	-	P	NB	O	O	O	NB	O	O	P	P	P	O	O	O	O	O
Enrollment	O	O	O	P	O	P	P	O	O	O	NB	O	O	P	O	P	O	O	O	O	O
Homeless	P	P	O	P	P	P	NB	O	O	P	NB	O	O	P	O	P	P	O	P	P	O
Migrant	O	P	O	P	P	P	NB	O	O	O	P	O	O	P	O	P	O	O	O	O	O
NGA Graduation/Drop Out	O	P	O	P	-	P	P	O	P	P	P	-	O	P	NB	P	O	P	P	O	O
Special Education - IEP Data	O	P	O	P	P	-	NB	P	O	O	O	O	O	P	NB	P	O	P	O	-	O
Statewide Unique Student IDs	O	O	O	P	O	O	P	O	O	O	O	O	O	O	O	O	P	O	O	O	O
Student-Teacher Link	-	P	O	P	-	NB	NB	O	P	P	NB	NB	P	NB	NB	P	O	-	NB	P	NB
Students Not Tested and Rationale	O	NB	O	P	O	O	P	O	P	NB	O	O	O	P	O	O	O	O	O	O	-
Data Content: Individual Staff/Teacher Data																					
Teacher Assessments (Praxis, etc.)	O	NB	P	P	O	O	NB	O	NB	O	NB	P	O	P	P	NB	O	O	O	O	O
Teacher Assignments	O	P	O	P	O	P	NB	O	NB	O	NB	P	P	P	P	O	O	-	O	O	O

- **“Features Matrix”:**
At-a-glance view of grantees’ progress towards SLDS components and capabilities



Grantee Activities & Resources *(continued)*

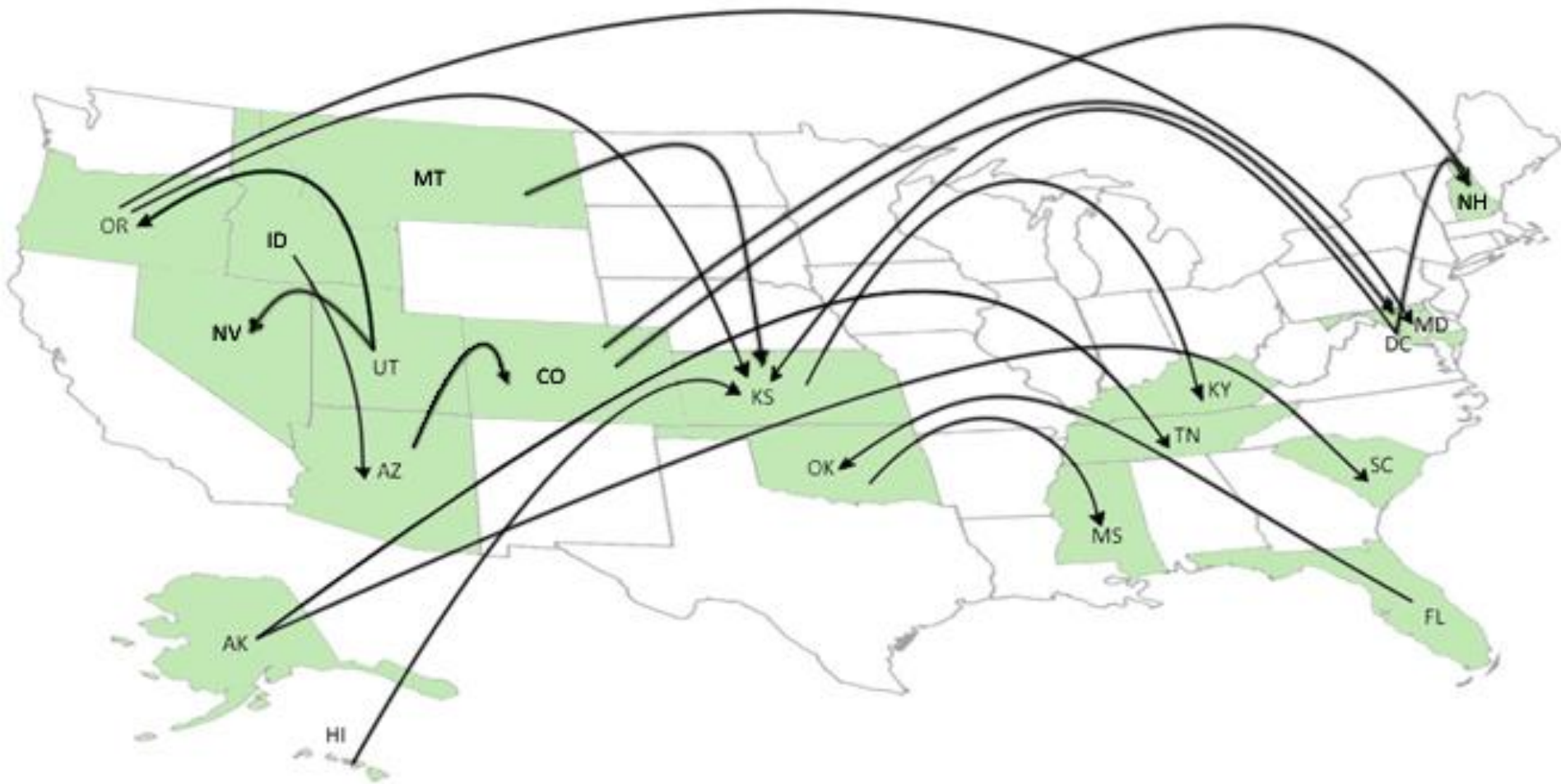


Grantee Webinars:
Monthly “webinar” discussions hosted by a grantee team to share best practices and give states a forum to discuss issues of interest

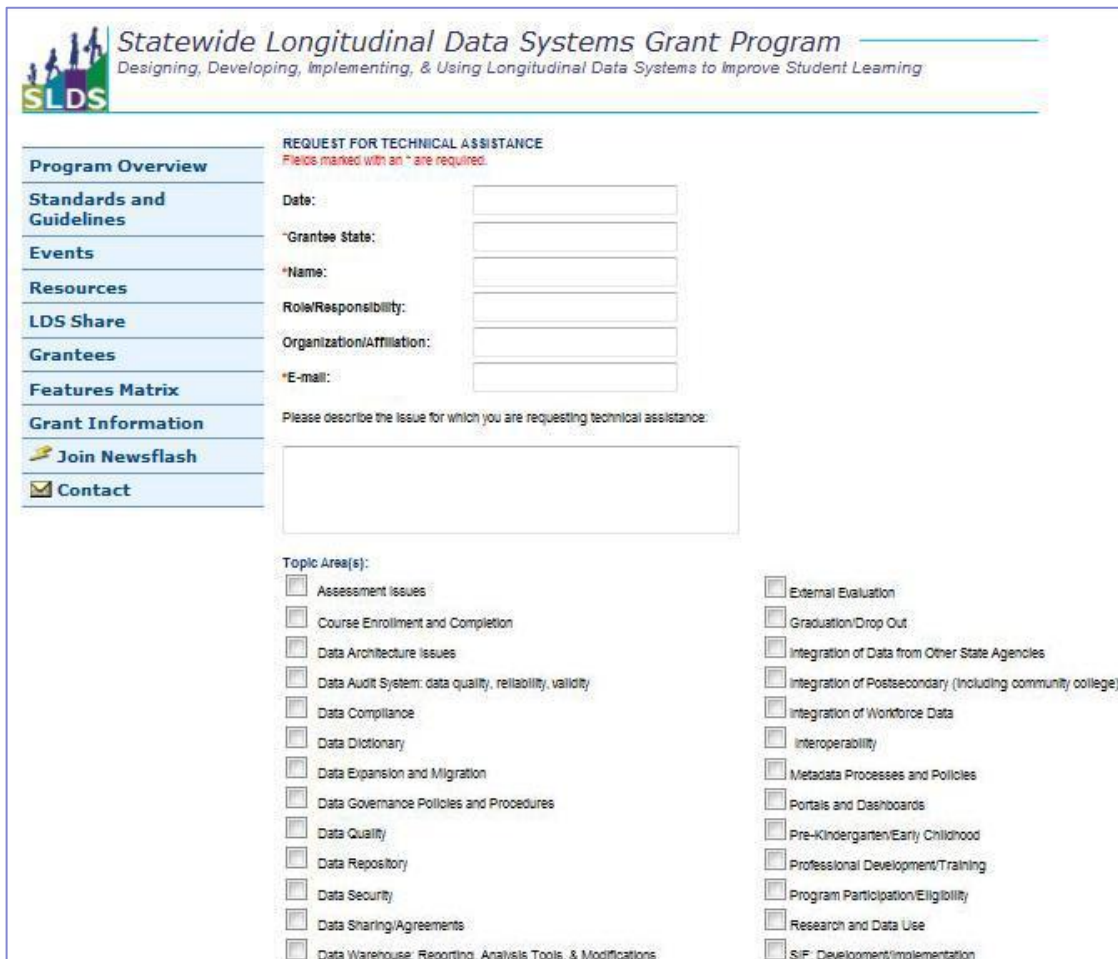


Grantee Activities & Resources (*continued*)

Personnel Exchange Network: Enables state staff to visit other education agencies to learn and share knowledge with colleagues across state lines



Grantee Activities & Resources *(continued)*



Statewide Longitudinal Data Systems Grant Program
Designing, Developing, Implementing, & Using Longitudinal Data Systems to Improve Student Learning

Program Overview

- Standards and Guidelines
- Events
- Resources
- LDS Share
- Grantees
- Features Matrix
- Grant Information
- Join Newsflash
- Contact

REQUEST FOR TECHNICAL ASSISTANCE
Fields marked with an * are required.

Date:

*Grantee State:

*Name:

Role/Responsibility:

Organization/Affiliation:

*E-mail:

Please describe the issue for which you are requesting technical assistance:

Topic Area(s):

<input type="checkbox"/> Assessment Issues	<input type="checkbox"/> External Evaluation
<input type="checkbox"/> Course Enrollment and Completion	<input type="checkbox"/> Graduation/Drop Out
<input type="checkbox"/> Data Architecture Issues	<input type="checkbox"/> Integration of Data from Other State Agencies
<input type="checkbox"/> Data Audit System: data quality, reliability, validity	<input type="checkbox"/> Integration of Postsecondary (Including community college)
<input type="checkbox"/> Data Compliance	<input type="checkbox"/> Integration of Workforce Data
<input type="checkbox"/> Data Dictionary	<input type="checkbox"/> Interoperability
<input type="checkbox"/> Data Expansion and Migration	<input type="checkbox"/> Metadata Processes and Policies
<input type="checkbox"/> Data Governance Policies and Procedures	<input type="checkbox"/> Portals and Dashboards
<input type="checkbox"/> Data Quality	<input type="checkbox"/> Pre-Kindergarten/Early Childhood
<input type="checkbox"/> Data Repository	<input type="checkbox"/> Professional Development/Training
<input type="checkbox"/> Data Security	<input type="checkbox"/> Program Participation/Eligibility
<input type="checkbox"/> Data Sharing/Agreements	<input type="checkbox"/> Research and Data Use
<input type="checkbox"/> Data Warehouse: Reporting, Analysis Tools, & Modifications	<input type="checkbox"/> SIF: Development/Implementation

– ● **Expert Consultants:**

Technical assistance is available to grantee states through non-governmental organizations and technical consultants.

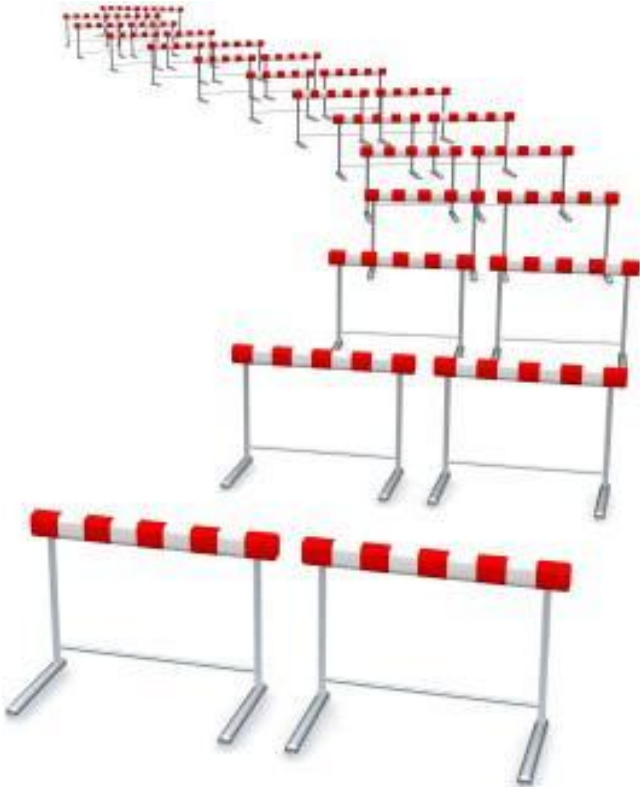
Past assistance has covered issues such as:

- Course code integration
- Data model validation
- Data dictionary/data mapping
- Governance planning
- Strategic SIF planning & gap analysis

Grantee Activities & Resources *(continued)*

- Grantee Conference
- Presentations and Meetings
- *Traveling Through Time: The Forum Guide to LDSs*
- SLDS Grantee Listserv
- Small Group Calls and Fast-Response Webinars
- Sub-topic Workgroups
- On-Site Technical Assistance

Issues Identified through the Program



- FERPA – data access for organizations
- State procurement issues with grant implementation – often takes longer than originally planned
- State education agencies as facilitating organization – new role for state collaboration
- Sustainability at the state level – impact of state economy

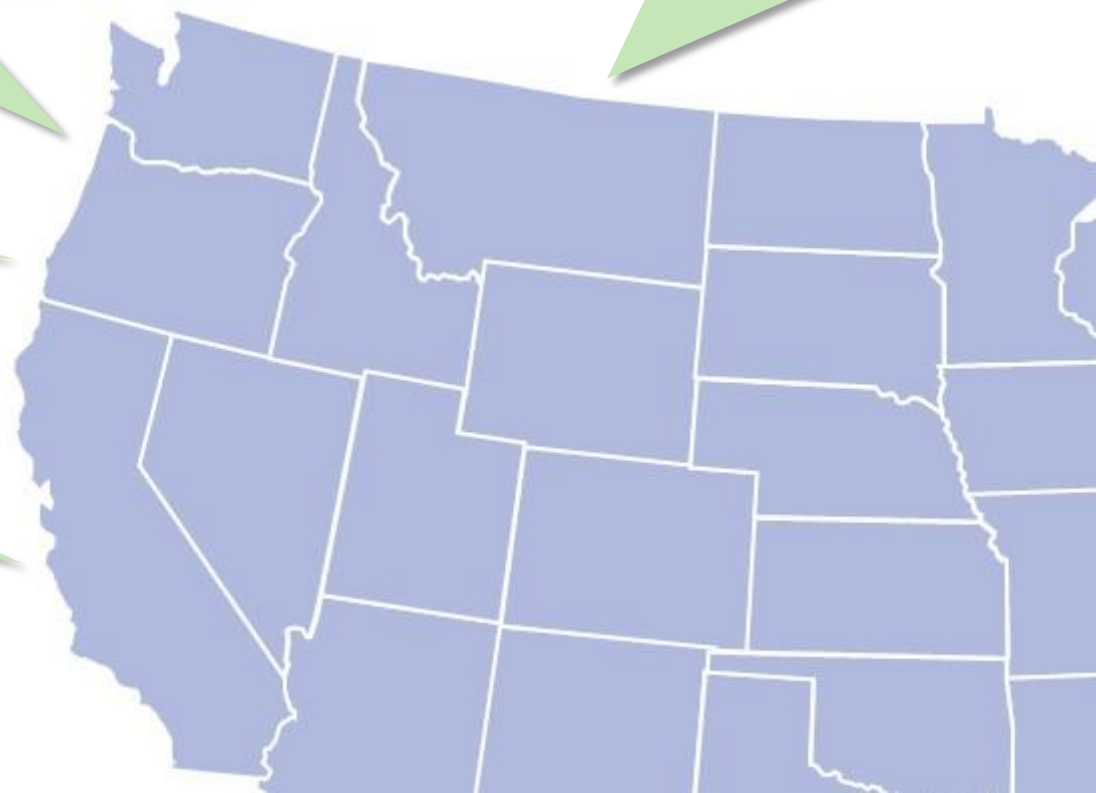
Lessons Learned: Successful Strategies for SLDS Development

"It's not just an IT project"

"State-managed, locally-operated"

*"Communicate
up and out"*

"Know who's in charge"



Next Steps for SLDS

- Allow for effective e-Transcripts and reliable connections to **early childhood, postsecondary, and workforce data**
- Provide data access to **research community and public stakeholders**
- Figure out how to build data structures for seamless transfers of student records **across state lines**

Contact Information

Website: <http://nces.ed.gov/programs/SLDS/>

Program Staff:

Tate Gould, PhD

Senior Program Officer, SLDS Grant Program

Tate.Gould@ed.gov, 202-219-7080

Emily Anthony

Program Officer, SLDS Grant Program

Emily.Anthony@ed.gov, 202-502-7495